



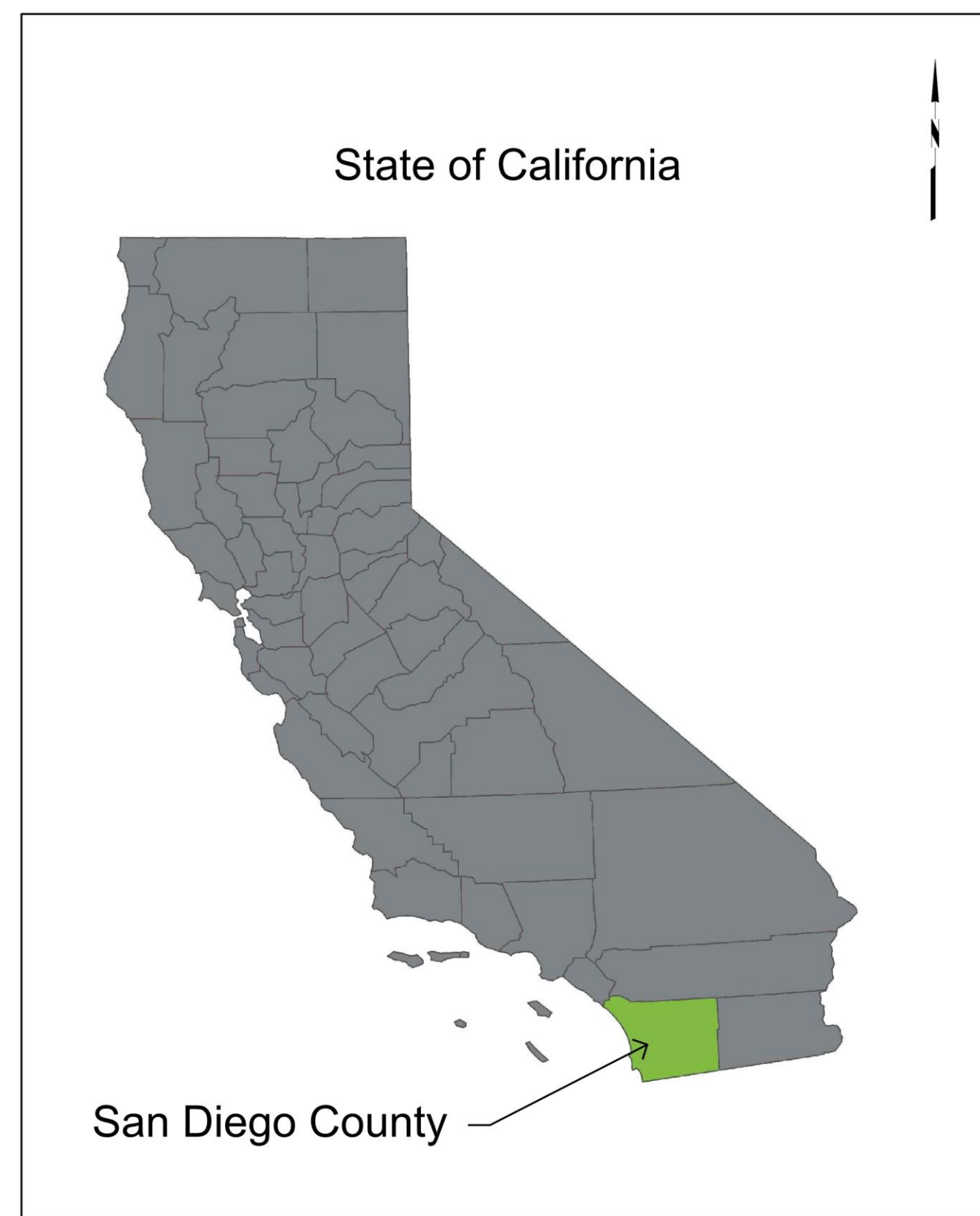
DRAWING LIST

REVISION DATE	SHEET NO.	DRAWING TITLE
	1.	TITLE SHEET
	2.	DATA SHEET
	3.	EXISTING AIRPORT LAYOUT PLAN
	4.	FUTURE AIRPORT LAYOUT PLAN
	5.	AIRPORT AIRSPACE DRAWING
	6.	RUNWAY 8L-26R INNER APPROACH AND DEPARTURE: PLAN & PROFILE
	7.	RUNWAY 8R-26L INNER APPROACH AND DEPARTURE: PLAN & PROFILE
	8.	LAND USE DRAWING
	9.	EXHIBIT A - AIRPORT PROPERTY INVENTORY MAP

AIRPORT LAYOUT PLAN UPDATE

BROWN FIELD MUNICIPAL AIRPORT

**CITY OF SAN DIEGO,
CALIFORNIA**



State of California

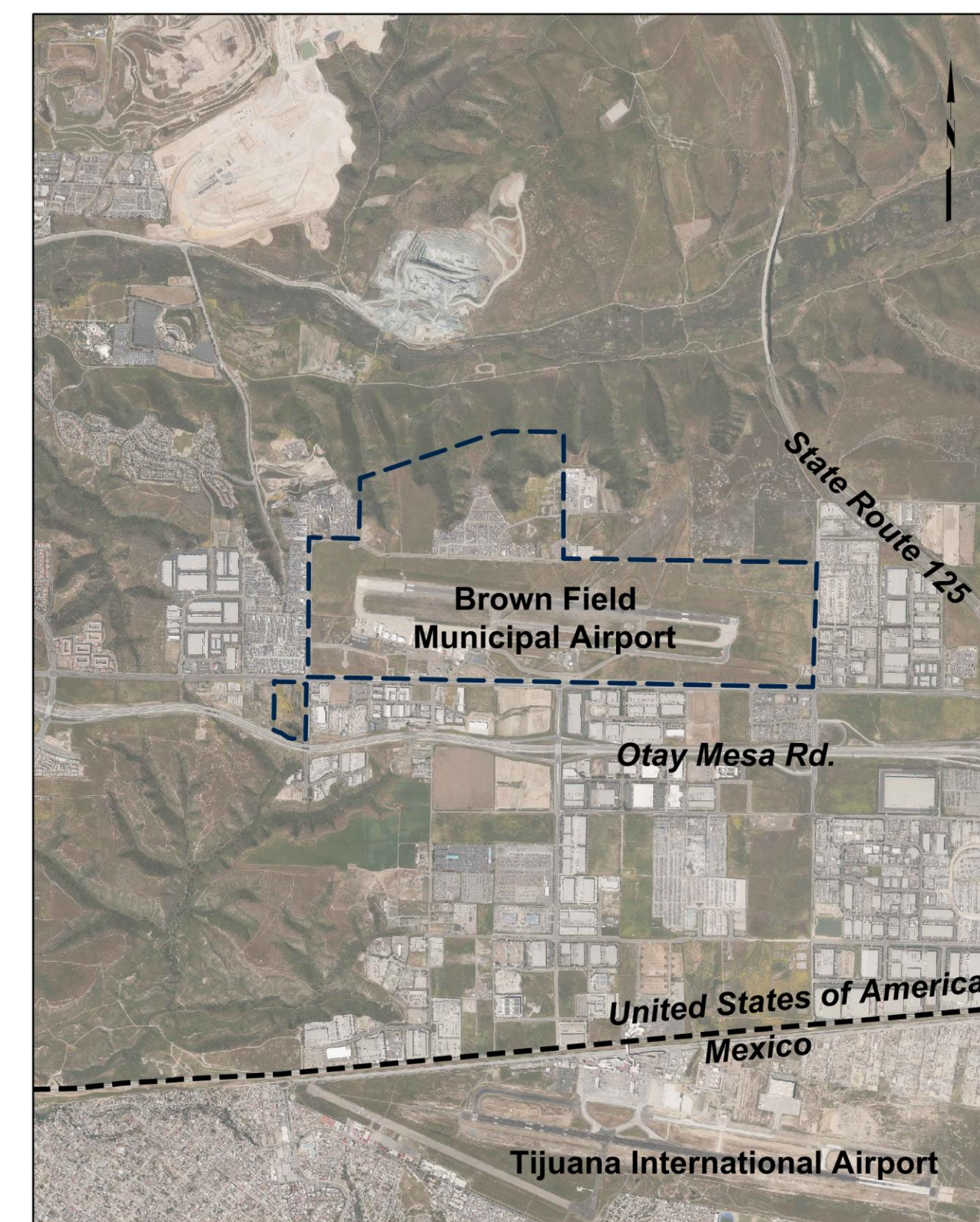
San Diego County

STATE MAP
NOT TO SCALE



Brown Field
Municipal Airport

LOCATION MAP
NOT TO SCALE



Brown Field
Municipal Airport

Otay Mesa Rd.

United States of America
Mexico

Tijuana International Airport

VICINITY MAP
SCALE: 1" = 3000'



FAA AIP NO.: 3-06-0213-018-2016

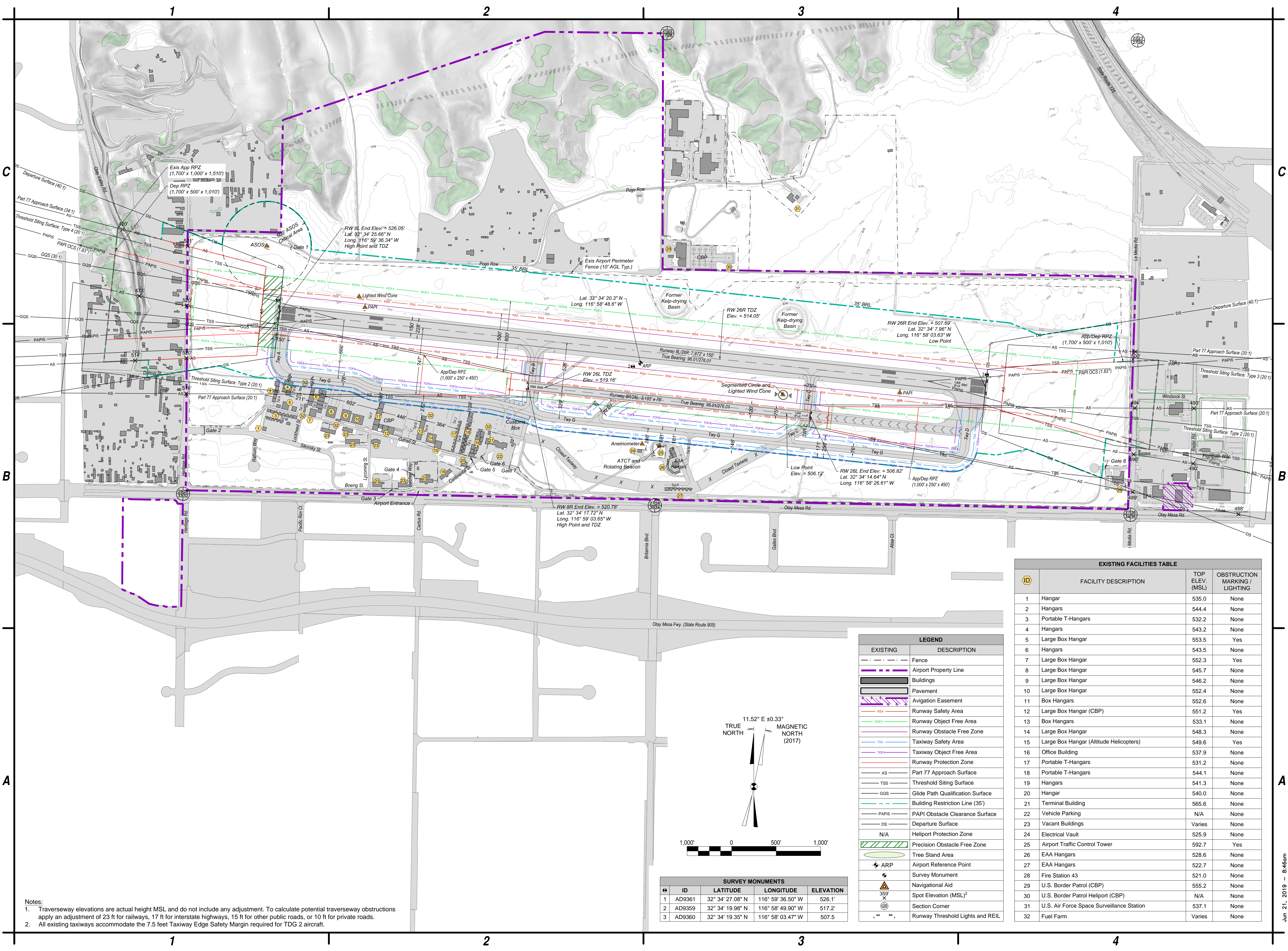
C&S PROJECT: Q74.001.001

JUNE 2019

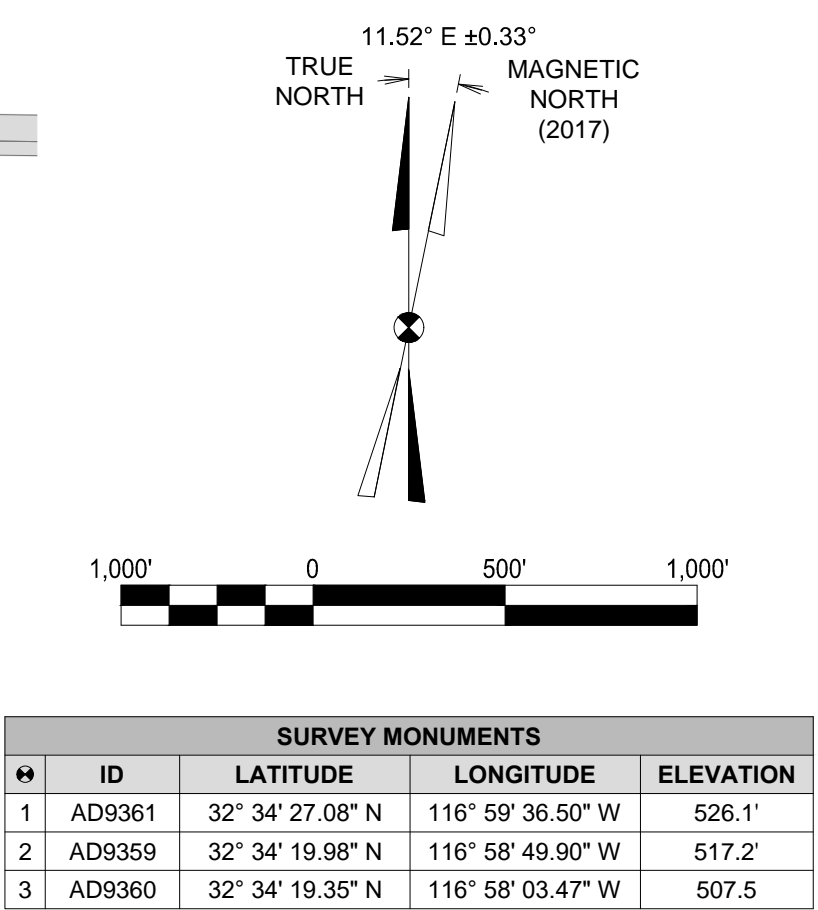
CITY OF SAN DIEGO	
SUBMITTED BY	<i>Rob Probst</i>
TITLE	DEPUTY DIRECTOR - AIRPORTS
DATE	27 JUN 19

Jun 21, 2019 - 8:39am
F:\Project\Q74 - City of San Diego\Q74001001 - Airport Master Plan\Planning-Study\CADD\SDM\Sheet Files\1 - Q74001001 - SDM_Title_Sheet.dwg

**AIRPORT LAYOUT PLAN UPDATE
 BROWN FIELD MUNICIPAL AIRPORT**
 CITY OF SAN DIEGO
 CALIFORNIA



Notes:
 1. Traverseway elevations are actual height MSL and do not include any adjustment. To calculate potential traverseway obstructions apply an adjustment of 23 ft for runways, 17 ft for interstate highways, 15 ft for other public roads, or 10 ft for private roads.
 2. All existing taxiways accommodate the 7.5 feet Taxiway Edge Safety Margin required for TDG 2 aircraft.



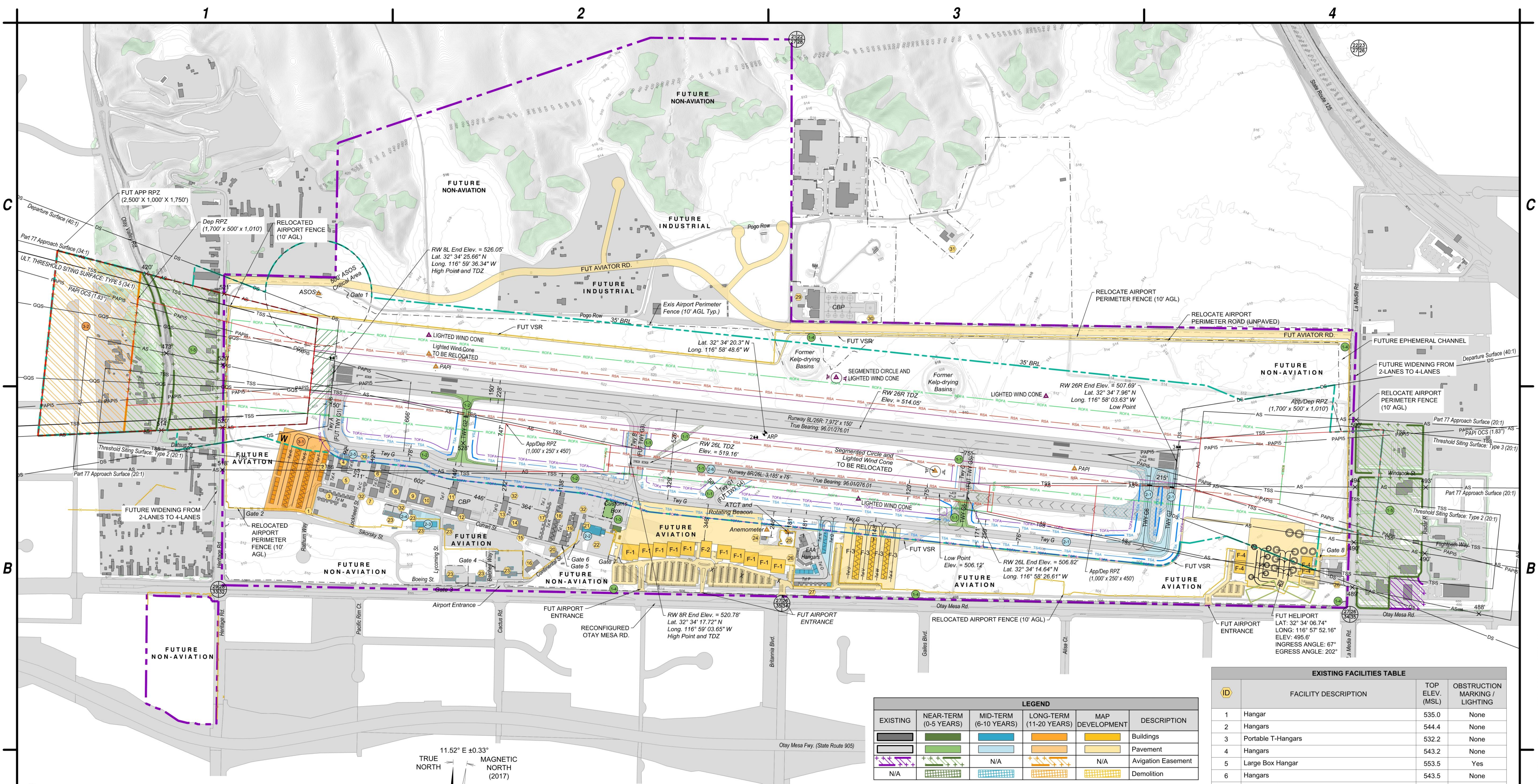
LEGEND	
EXISTING	DESCRIPTION
[Symbol]	Fence
[Symbol]	Airport Property Line
[Symbol]	Buildings
[Symbol]	Pavement
[Symbol]	Aviation Easement
[Symbol]	Runway Safety Area
[Symbol]	Runway Object Free Area
[Symbol]	Runway Obstacle Free Zone
[Symbol]	Taxiway Safety Area
[Symbol]	Taxiway Object Free Area
[Symbol]	Runway Protection Zone
[Symbol]	Part 77 Approach Surface
[Symbol]	Threshold Siting Surface
[Symbol]	Glide Path Qualification Surface
[Symbol]	Building Restriction Line (35')
[Symbol]	PAPI Obstacle Clearance Surface
[Symbol]	Departure Surface
[Symbol]	N/A
[Symbol]	Heliprot Protection Zone
[Symbol]	Precision Obstacle Free Zone
[Symbol]	Tree Stand Area
[Symbol]	Airport Reference Point
[Symbol]	Survey Monument
[Symbol]	Navigational Aid
[Symbol]	Spot Elevation (MSL) ²
[Symbol]	Section Corner
[Symbol]	Runway Threshold Lights and REIL

EXISTING FACILITIES TABLE			
ID	FACILITY DESCRIPTION	TOP ELEV. (MSL)	OBSTRUCTION MARKING / LIGHTING
1	Hangar	535.0	None
2	Hangars	544.4	None
3	Portable T-Hangars	532.2	None
4	Hangars	543.2	None
5	Large Box Hangar	553.5	Yes
6	Hangars	543.5	None
7	Large Box Hangar	552.3	Yes
8	Large Box Hangar	545.7	None
9	Large Box Hangar	546.2	None
10	Large Box Hangar	552.4	None
11	Box Hangars	552.6	None
12	Large Box Hangar (CBP)	551.2	Yes
13	Box Hangars	533.1	None
14	Large Box Hangar	548.3	None
15	Large Box Hangar (Altitude Helicopters)	549.6	Yes
16	Office Building	537.9	None
17	Portable T-Hangars	531.2	None
18	Portable T-Hangars	544.1	None
19	Hangars	541.3	None
20	Hangar	540.0	None
21	Terminal Building	565.6	None
22	Vehicle Parking	N/A	None
23	Vacant Buildings	Varies	None
24	Electrical Vault	525.9	None
25	Airport Traffic Control Tower	592.7	Yes
26	EAA Hangars	528.6	None
27	EAA Hangars	522.7	None
28	Fire Station 43	521.0	None
29	U.S. Border Patrol (CBP)	555.2	None
30	U.S. Border Patrol Heliprot (CBP)	N/A	None
31	U.S. Air Force Space Surveillance Station	537.1	None
32	Fuel Farm	Varies	None

Jun 21, 2019 - 8:46am - B:\form - Airport Master Plans\Planning-Study\CADD\SDM\Sheet - Title 3 - 074001001 - SDM_Existing_Facilities.dwg
 A - Airport Master Plans\Planning-Study\CADD\SDM\Sheet - Title 3 - 074001001 - SDM_Existing_Facilities.dwg
 F:\Projects\Q24 - City of San Diego\074001001 - Airport Master Plans\Planning-Study\CADD\SDM\Sheet - Title 3 - 074001001 - SDM_Existing_Facilities.dwg

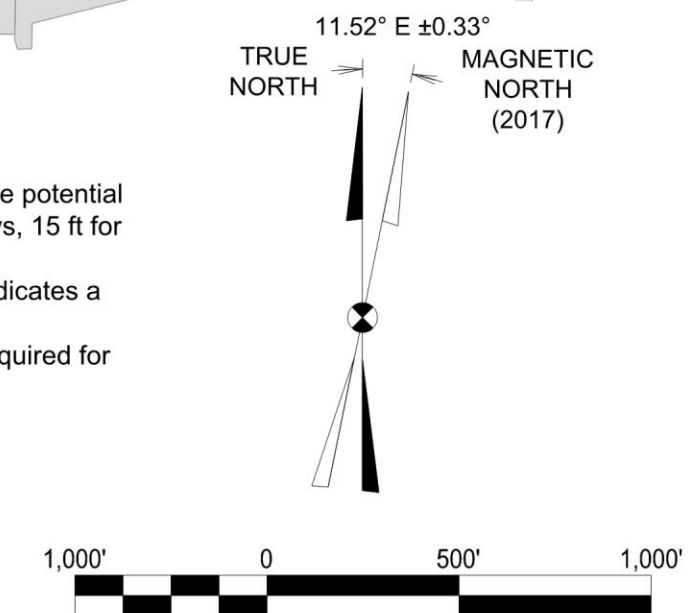
MARK	DATE	DESCRIPTION
REVISIONS		
		PROJECT NO: Q74.001.001
		DATE: JUNE 2019
		DRAWN BY: J.J.S.
		DESIGNED BY: J.J.S.
		CHECKED BY: N.M.A.

EXISTING AIRPORT LAYOUT PLAN



- Notes:
- Traverseway elevations are actual height MSL and do not include any adjustment. To calculate potential traverseway obstructions apply an adjustment of 23 ft for railways, 17 ft for interstate highways, 15 ft for other public roads, or 10 ft for private roads.
 - Lowercase, italicized text indicates an existing condition while uppercase non-italicized text indicates a future condition.
 - All existing and proposed taxiways accommodate the 7.5 feet Taxiway Edge Safety Margin required for TDG 2 aircraft.

ID	LATITUDE	LONGITUDE	ELEVATION
1	AD9361 32° 34' 27.08" N	116° 59' 36.50" W	526.1'
2	AD9359 32° 34' 19.98" N	116° 58' 49.90" W	517.2'
3	AD9360 32° 34' 19.35" N	116° 58' 03.47" W	507.5'



LEGEND					
EXISTING	NEAR-TERM (0-5 YEARS)	MID-TERM (6-10 YEARS)	LONG-TERM (11-20 YEARS)	MAP DEVELOPMENT	DESCRIPTION
[Symbol]	[Symbol]	[Symbol]	[Symbol]	[Symbol]	Buildings
[Symbol]	[Symbol]	[Symbol]	[Symbol]	[Symbol]	Pavement
[Symbol]	[Symbol]	[Symbol]	[Symbol]	[Symbol]	Avigation Easement
[Symbol]	[Symbol]	[Symbol]	[Symbol]	[Symbol]	Demolition

LEGEND		
EXISTING	ULTIMATE	DESCRIPTION
[Symbol]	[Symbol]	Fence
[Symbol]	[Symbol]	Airport Property Line
[Symbol]	[Symbol]	Runway Safety Area
[Symbol]	[Symbol]	Runway Object Free Area
[Symbol]	[Symbol]	Runway Obstacle Free Zone
[Symbol]	[Symbol]	Taxiway Safety Area
[Symbol]	[Symbol]	Taxiway Object Free Area
[Symbol]	[Symbol]	Runway Protection Zone
[Symbol]	[Symbol]	Part 77 Approach Surface
[Symbol]	[Symbol]	Threshold Siting Surface
[Symbol]	[Symbol]	Glide Path Qualification Surface
[Symbol]	[Symbol]	Building Restriction Line (35')
[Symbol]	[Symbol]	PAPI Obstacle Clearance Surface
[Symbol]	[Symbol]	Departure Surface
[Symbol]	[Symbol]	Heliprot Protection Zone
[Symbol]	[Symbol]	Precision Obstacle Free Zone
[Symbol]	[Symbol]	Tree Stand Area
[Symbol]	[Symbol]	Airport Reference Point
[Symbol]	[Symbol]	Survey Monument
[Symbol]	[Symbol]	Navigational Aid
[Symbol]	[Symbol]	Spot Elevation (MSL) ²
[Symbol]	[Symbol]	Section Corner
[Symbol]	[Symbol]	Runway Threshold Lights and REIL

METROPOLITAN AIRPARK (MAP) DEVELOPMENT		
ID	FACILITY DESCRIPTION	TOP ELEV. (MSL)
F-1	Corporate Hangars	576 (est.)
F-2	FBO Offices & Pilot Lounge	576 (est.)
F-3	T-Hangars	527 (est.)
F-4	Helicopter FBO Facilities	535 (est.)

PROPOSED PROJECTS		
ID	FACILITY DESCRIPTION	TOP ELEV. (MSL)
NEAR-TERM: 0 - 5 YEARS		
1-1	Runway 8R/26L and Associated Projects	Varies
1-2	Taxiway G West End Improvements and New Taxiway	Varies
1-3	Construct New CBP Facility and Transient Ramp Improvements	548 (est.)
1-4	Fencing Improvements	Varies
1-5	Avigation Easements for Runway 8L/26R RPZs	N/A
MID-TERM: 6 - 10 YEARS		
2-1	Realign Taxiway D and Taxiway G Improvements	508 (est.)
2-2	Construct/Rehabilitate Terminal Building	548 (est.)
2-3	Construct New Maintenance Building	548 (est.)
2-4	Demolish Abandoned Buildings	Varies
2-5	Demolish/Relocate Hangars from TOFA	543.2
2-6	Runway 8R/26L and Associated Projects Preventative Maintenance	Varies
LONG-TERM: 11-20 YEARS		
3-1	New T-Hangars on West End of Apron	544 (est.)
3-2	Avigation Easements for Runway 8L Future Approach RPZ	N/A

EXISTING FACILITIES TABLE			
ID	FACILITY DESCRIPTION	TOP ELEV. (MSL)	OBSTRUCTION MARKING / LIGHTING
1	Hangar	535.0	None
2	Hangars	544.4	None
3	Portable T-Hangars	532.2	None
4	Hangars	543.2	None
5	Large Box Hangar	553.5	Yes
6	Hangars	543.5	None
7	Large Box Hangar	552.3	Yes
8	Large Box Hangar	545.7	None
9	Large Box Hangar	546.2	None
10	Large Box Hangar	552.4	None
11	Box Hangars	552.6	None
12	Large Box Hangar (CBP)	551.2	Yes
13	Box Hangars	533.1	None
14	Large Box Hangar	548.3	None
15	Large Box Hangar (Altitude Helicopters)	549.6	Yes
16	Office Building	537.9	None
17	Portable T-Hangars	531.2	None
18	Portable T-Hangars	544.1	None
19	Hangars	541.3	None
20	Hangar	540.0	None
21	Terminal Building	565.6	None
22	Vehicle Parking	N/A	None
23	Vacant Buildings	Varies	None
24	Electrical Vault	525.9	None
25	Airport Traffic Control Tower	592.7	Yes
26	EAA Hangars	528.6	None
27	EAA Hangars	522.7	None
28	Fire Station 43	521.0	None
29	U.S. Border Patrol (CBP)	555.2	None
30	U.S. Border Patrol Heliprot (CBP)	N/A	None
31	U.S. Air Force Space Surveillance Station	537.1	None
32	Fuel Farm	Varies	None

NO.	DATE	DESCRIPTION
9	11/18	UPDATE FOR 2018 MASTER PLAN (C&S COMPANIES)
8	8/11	UPDATE FOR 2011 MASTER PLAN (M&H)
7	3/10	AMENDED CONDITIONAL APPROVAL LETTER (M&H)
6	8/09	CONDITIONAL APPROVAL FOR DFC DEVELOPMENT (M&H)
5	3/05	MEET NEW DESIGN STANDARDS AND ADP PROJECTS (M&H)
4	7/04	END OF RUNWAY 28L RELOCATION (M&H)
3	5/04	GEODETIC AZIMUTH AND OTHER SPONSOR REQUIRED CORRECTIONS
2	3/04	ALP UPDATE TO REFLECT SAFETY AREA COMPLIANCE
1	7/99	"NEW" UPDATE TO REFLECT "BROWNFIELD" AIRPORT

REVISIONS

PROJECT NO: Q74.001.001
 DATE: JUNE 2019
 DRAWN BY: J.J.S.
 DESIGNED BY: J.J.S.
 CHECKED BY: N.M.A.

The contents of this plan do not necessarily reflect the official views or policy of the FAA. Acceptance of this document by the FAA does not in any way constitute a commitment on the part of the United States to participate in any development depicted herein nor does it indicate that the proposed development is environmentally acceptable in accordance with appropriate public laws.

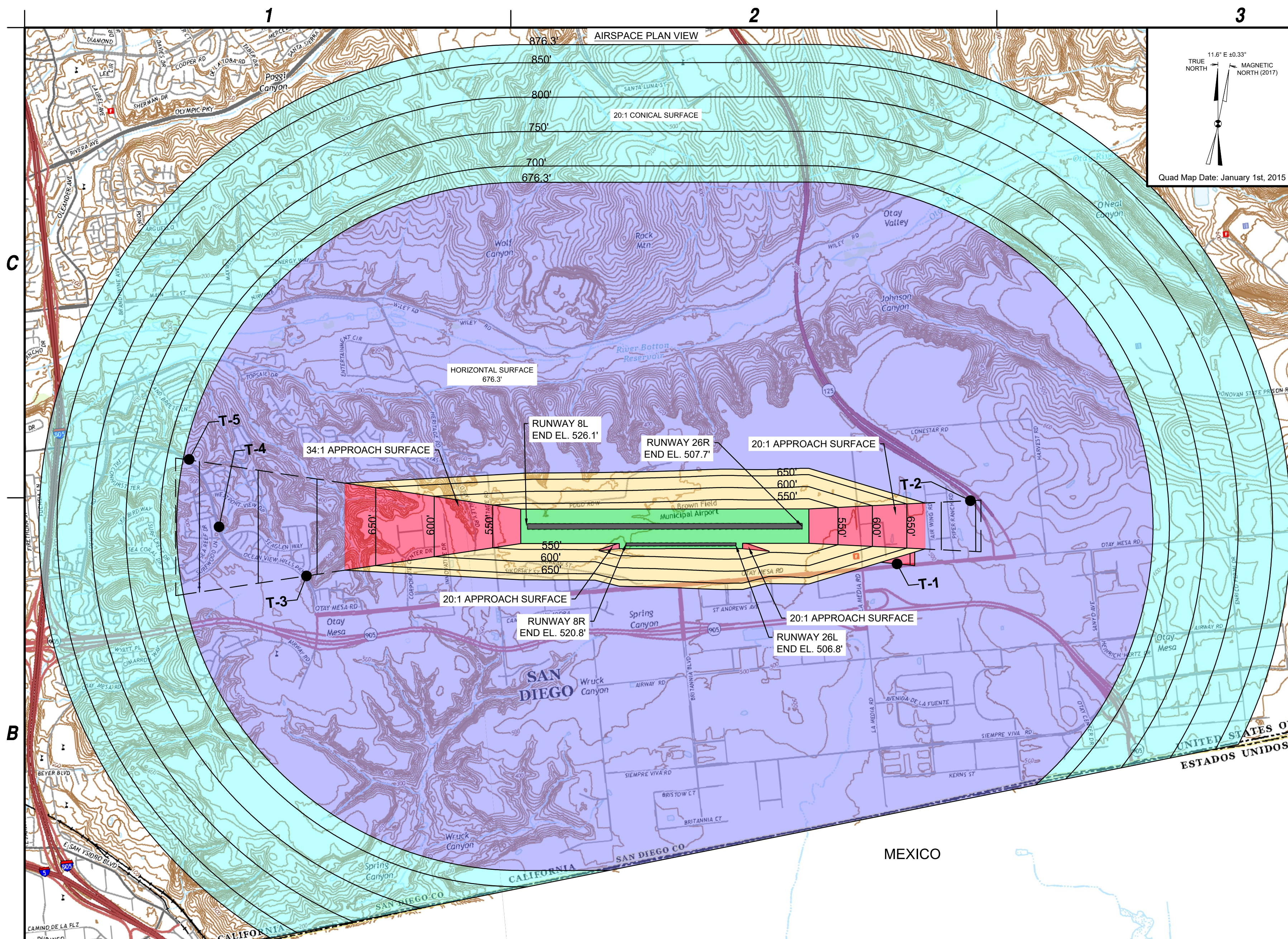
FAA's approval of this Airport Layout Plan (ALP) represents acceptance of the general location of future facilities depicted. During the preliminary design phase, the airport owner is required to resubmit for approval the final locations, heights and exterior finish of structures. FAA's concern is obstructions, impact on electronic aids or adverse effects on controller view of aircraft approach and ground movement areas which could adversely affect the safety, efficiency or utility of the airport.

Approved conditionally 07-08-2019
 Subject to comments contained in our letter dated 07-08-2019
 FEDERAL AVIATION ADMINISTRATION
 Western-Pacific Region
 By: [Signature]
 Manager - LAX/ADO

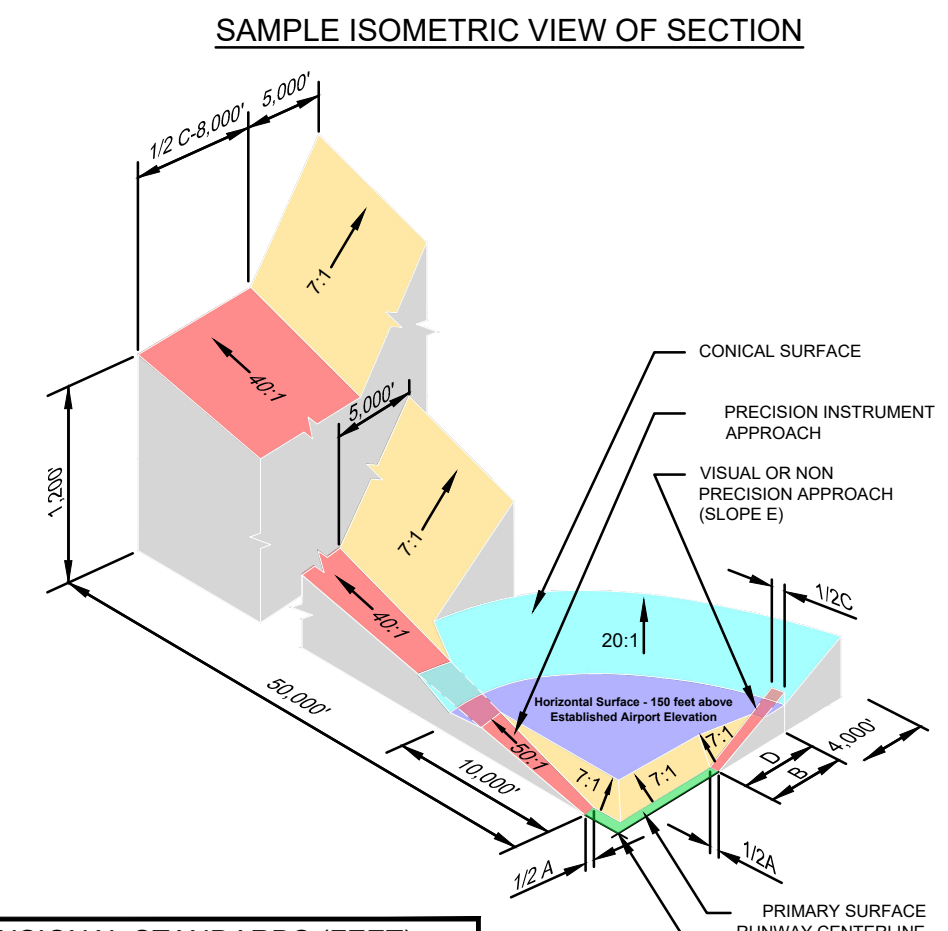
FAA APPROVAL STAMP

CITY OF SAN DIEGO
[Signature]
 27 JUN 19
 SUBMITTED BY:
 DATE:

FUTURE AIRPORT LAYOUT PLAN
 4 of 9



- Primary Surface
- Approach Surface
- Transitional Surface
- Horizontal Surface
- Conical Surface



DIM	ITEM	DIMENSIONAL STANDARDS (FEET)					
		VISUAL RUNWAY		NON-PRECISION INSTRUMENT RUNWAY		PRECISION INSTRUMENT RUNWAY	
A	WIDTH OF PRIMARY SURFACE AND APPROACH SURFACE WIDTH AT INNER END	250	500	500	500	1,000	1,000
B	RADIUS OF HORIZONTAL SURFACE	5,000		10,000		10,000	
C	APPROACH SURFACE WIDTH AT END	1,250	1,500	2,000	3,000	4,000	16,000
D	APPROACH SURFACE LENGTH	5,000		10,000		10,000	
E	APPROACH SLOPE	20:1		20:1		34:1	
F	APPROACH FLARE	0:1:1		0:1:1		0:1:1	

A - UTILITY RUNWAYS
 B - RUNWAYS LARGER THAN UTILITY
 C - VISIBILITY MINIMUMS GREATER THAN 3/4 MILE
 D - VISIBILITY MINIMUMS AS LOW AS 3/4 MILE
 * - PRECISION INSTRUMENT APPROACH SLOPE IS 50:1 FOR INNER 10,000 FEET AND 40:1 FOR AN ADDITIONAL 40,000 FEET

OBJECT ID	DESCRIPTION	SURVEY DATE	GROUND ELEVATION (MSL)	TRAVERSEWAY ELEVATION (MSL)	TRAVERSEWAY ELEVATION (AGL)	PART 77 APPROACH SURFACE PENETRATION	PROPOSED DISPOSITION
T-1	OCEAN VIEW HILLS RD.	11/7/2013	486.00	501.00	15	-230.05	NONE

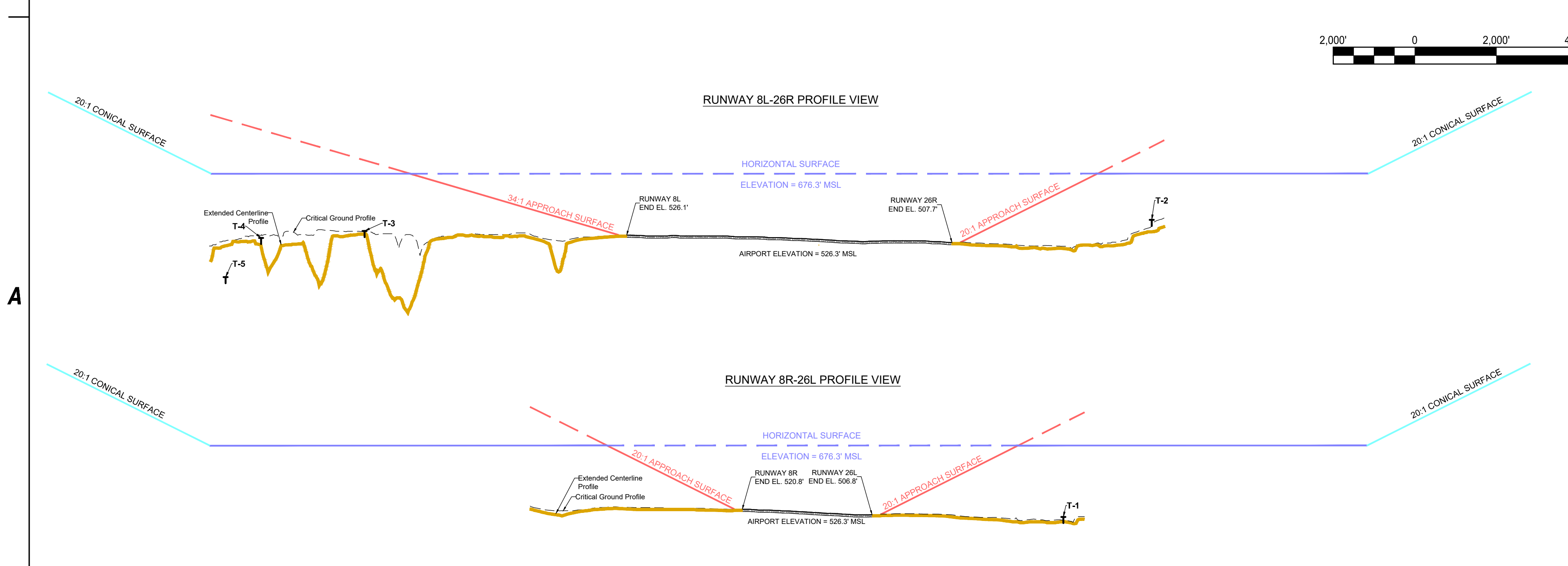
OBJECT ID	DESCRIPTION	SURVEY DATE	GROUND ELEVATION (MSL)	TRAVERSEWAY ELEVATION (MSL)	TRAVERSEWAY ELEVATION (AGL)	PART 77 APPROACH SURFACE PENETRATION	PROPOSED DISPOSITION
T-2	OCEAN VIEW HILLS RD.	11/7/2013	550.55	565.55	15	-195.20	NONE

OBJECT ID	DESCRIPTION	SURVEY DATE	GROUND ELEVATION (MSL)	TRAVERSEWAY ELEVATION (MSL)	TRAVERSEWAY ELEVATION (AGL)	PART 77 APPROACH SURFACE PENETRATION	PROPOSED DISPOSITION
T-3	OCEAN VIEW HILLS RD.	11/7/2013	520.96	535.96	15	-173.27	NONE
T-4	OCEAN VIEW HILLS RD.	11/7/2013	504.02	519.02	15	-264.86	NONE
T-5	OCEAN VIEW HILLS RD.	11/7/2013	408.03	423.03	15	-386.44	NONE

*NOTE: ALL PRIVATE ROADS/ROADWAYS/INTERSTATES/RAILROADS ARE DEPICTED 10/15/17/23 FEET HIGHER THAN THE SURVEYED LOCATION PER FAA SOP NO. 200

NOTES:

1. FEDERAL AVIATION REGULATIONS PART 77, STATES THAT A STRUCTURE IS PRESUMED TO HAVE A SUBSTANTIAL ADVERSE EFFECT UPON THE SAFE AND EFFICIENT USE OF NAVIGABLE AIRSPACE IF ITS HEIGHT EXCEEDS THE FOLLOWING STANDARDS:
 - 1.1. A HEIGHT OF FIVE HUNDRED (500) FEET ABOVE GROUND LEVEL AT THE SITE OF THE OBJECT ANYWHERE IN THE STATE.
 - 1.2. A HEIGHT THAT IS TWO HUNDRED (200) FEET ABOVE GROUND LEVEL OR ABOVE THE ESTABLISHED AIRPORT ELEVATION, WHICHEVER IS HIGHER, WITHIN THREE (3) NAUTICAL MILES OF THE ESTABLISHED REFERENCED POINT OF A PUBLIC-USE AIRPORT, EXCLUDING HELIPORTS, AND THE HEIGHT INCREASES IN THE PROPORTION OF ONE HUNDRED (100) FEET FOR EACH ADDITIONAL NAUTICAL MILE OF DISTANCE FROM THE AIRPORT UP TO A MAXIMUM OF FIVE HUNDRED (500) FEET.
 - 1.3. A HEIGHT WITHIN A TERMINAL OBSTACLE CLEARANCE AREA, INCLUDING AN INITIAL APPROACH SEGMENT, A DEPARTURE AREA, AND A CIRCLING APPROACH AREA, AS DEFINED BY FEDERAL LAWS AND REGULATIONS, WHICH WOULD RESULT IN THE VERTICAL DISTANCE BETWEEN ANY POINT ON THE OBJECT AND AN ESTABLISHED MINIMUM INSTRUMENT FLIGHT ALTITUDE WITHIN THAT AREA OR SEGMENT TO BE LESS THAN THE REQUIRED OBSTACLE CLEARANCE.
 - 1.4. A HEIGHT WITHIN AN EN ROUTE OBSTACLE CLEARANCE AREA, AS DEFINED BY FEDERAL LAWS AND REGULATIONS, INCLUDING TURN AND TERMINATION AREAS, OF A FEDERAL AIRWAY OR APPROVED OFF-AIRWAY ROUTE, THAT WOULD INCREASE THE MINIMUM OBSTACLE CLEARANCE ALTITUDE.
 - 1.5. THE SURFACE OF A TAKEOFF AND LANDING AREA OF A PUBLIC-USE AIRPORT OR ANY IMAGINARY SURFACE AS ESTABLISHED BY FAR PART 77. HOWEVER, NO PART OF THE TAKEOFF OR LANDING AREA ITSELF WILL BE CONSIDERED TO BE AN OBSTRUCTION.
2. CHAPTER 11 ARTICLE 2, DIVISION 3, SECTION 112.03 - ORDINANCE NUMBER O-20047 OF THE SAN DIEGO MUNICIPAL CODE CONTAINS FURTHER INFORMATION REGARDING THE PROTECTION OF LAND USE WITHIN AIRPORT AIRSPACE.
3. FAR PART 77 IMAGINARY SURFACES ARE AS SHOWN ON THIS SHEET FOR BROWN FIELD MUNICIPAL AIRPORT. THESE SURFACES ARE DEPICTED BASED UPON EXISTING AND ULTIMATE AIRPORT DEVELOPMENT.



C&S COMPANIES
 C&S Engineers, Inc.
 2355 Northside Drive
 Suite 350
 San Diego, California 92108
 Phone: (619) 296-9373
 Fax: (619) 296-5683
 www.cscos.com

ATKINS
 Member of the SNC-Lavalin Group
 7175 Murrell Road
 Melbourne, Florida 32940
 Tel: (321) 775-6231
 Fax: (407) 806-4500
 www.atkinsglobal.com/northamerica

The City of
SAN DIEGO

BROWN FIELD MUNICIPAL AIRPORT
CITY OF SAN DIEGO
CALIFORNIA

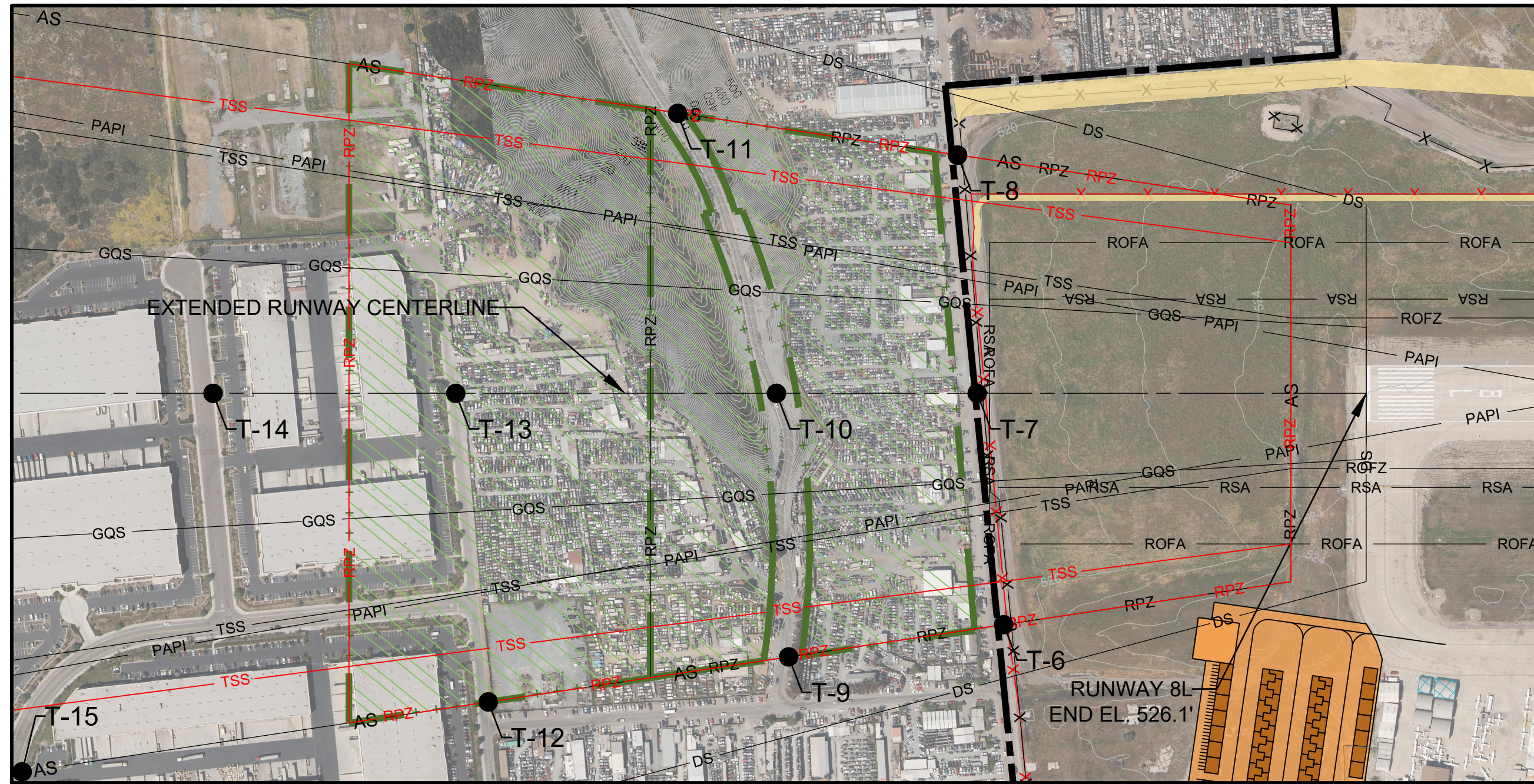
MARK	DATE	DESCRIPTION
REVISIONS		
PROJECT NO: Q74.001.001		
DATE: JUNE 2019		
DRAWN BY: K.A. Krier		
DESIGNED BY: K.A. Krier		
CHECKED BY: A.M. Marron		

AIRPORT AIRSPACE DRAWING

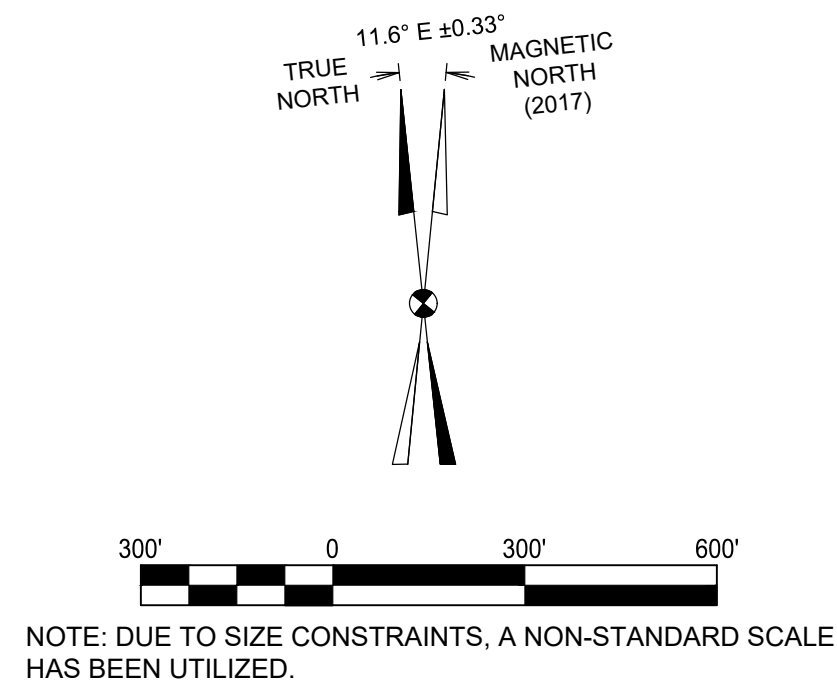
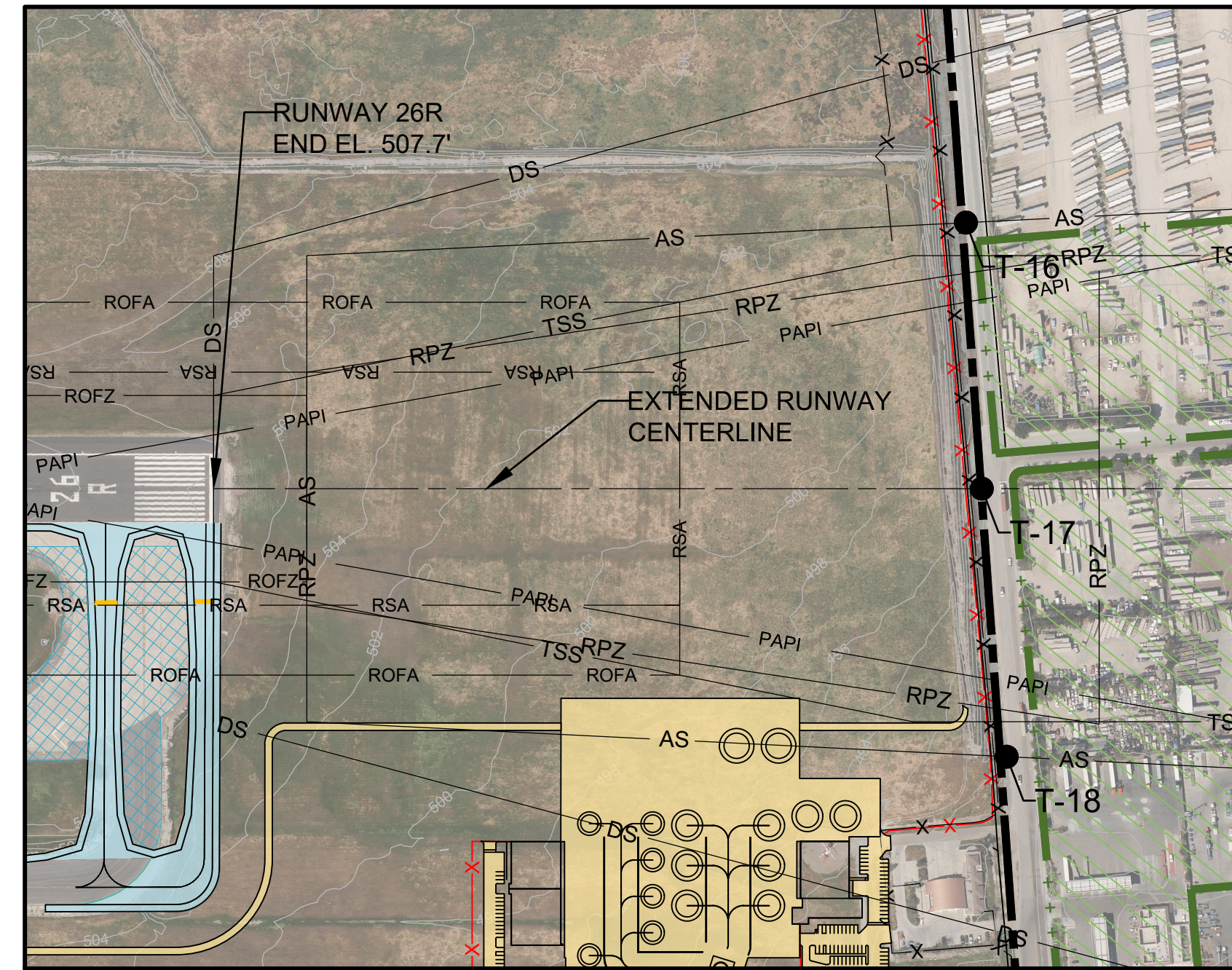
5 of 9

Jun 25, 2019 - 4:13pm
 M:\05_Projects\City of San Diego\100054723_MRF-SDM-AMPL\SDM_V4.0_Planning & Design\4.1_CAD\OX - SDM - Part 77.dwg

RUNWAY 8L PLAN VIEW



RUNWAY 26R PLAN VIEW



NOTE: DUE TO SIZE CONSTRAINTS, A NON-STANDARD SCALE HAS BEEN UTILIZED.

RUNWAY 8L SIGNIFICANT OBJECT AND TRAVERSEWAY TABLE

OBJECT ID	DESCRIPTION	SURVEY DATE	34:1 PART 77 APPROACH SURFACE PENETRATION	EXISTING 20:1 THRESHOLD SITING SURFACE PENETRATION	FUTURE 34:1 THRESHOLD SITING SURFACE PENETRATION	40:1 DEPARTURE SURFACE PENETRATION	GROUND ELEVATION (MSL)	OBJECT ELEVATION (MSL)	OBJECT ELEVATION (AGL)	TRIGGERING EVENT	PROPOSED DISPOSITION
T-6	HERITAGE RD.	11/7/2013	-14.54	-40.24	-20.42	-16.18	518.93	533.93	15	NONE	NONE
T-7	HERITAGE RD.	11/7/2013	-22.28	-49.42	-28.16	-23.61	518.26	528.26	15	NONE	NONE
T-8	HERITAGE RD.	11/7/2013	-22.40	-50.62	-28.29	-23.50	519.66	529.66	15	NONE	NONE
T-9	OTAY VALLEY RD.	11/7/2013	-38.17	-75.62	-44.05	-37.29	512.09	527.09	15	NONE	NONE
T-10	OTAY VALLEY RD.	11/7/2013	-79.70	-117.81	-85.58	-78.67	471.51	486.51	15	NONE	NONE
T-11	OTAY VALLEY RD.	11/7/2013	-138.19	-181.70	-144.07	-136.01	420.73	435.73	15	NONE	NONE
T-12	INNOVATIVE DR.	11/7/2013	-48.33	-102.19	-54.21	-43.93	525.38	540.38	15	NONE	NONE
T-13	INNOVATIVE DR.	11/7/2013	-53.58	-109.22	-59.46	-48.80	522.66	537.66	15	NONE	NONE
T-14	EXPOSITION WAY	11/7/2013	-73.22	-142.12	-79.10	-65.60	521.97	536.97	15	NONE	NONE
T-15	CORPORATE CENTER DR.	11/7/2013	-90.85	-170.19	-96.74	-81.00	519.25	534.25	15	NONE	NONE

*NOTE: ALL PRIVATE ROADS/ROADWAYS/INTERSTATES/RAILROADS ARE DEPICTED 10/15/17/23 FEET HIGHER THAN THE SURVEYED LOCATION PER FAA SOP NO. 200

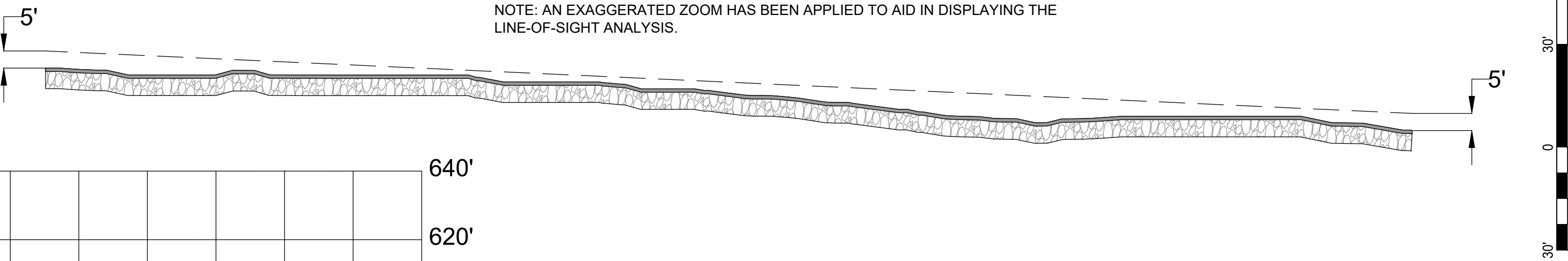
RUNWAY 26R SIGNIFICANT OBJECT AND TRAVERSEWAY TABLE

OBJECT ID	DESCRIPTION	SURVEY DATE	20:1 PART 77 APPROACH SURFACE PENETRATION	20:1 THRESHOLD SITING SURFACE PENETRATION	40:1 DEPARTURE SURFACE PENETRATION	GROUND ELEVATION (MSL)	OBJECT ELEVATION (MSL)	OBJECT ELEVATION (AGL)	TRIGGERING EVENT	PROPOSED DISPOSITION
T-16	LA MEDIA RD.	11/7/2013	-54.86	-64.86	-24.33	508.02	523.02	15	NONE	NONE
T-17	LA MEDIA RD.	11/7/2013	-71.86	-81.86	-41.34	494.47	506.00	15	NONE	NONE
T-18	LA MEDIA RD.	11/7/2013	-78.36	-88.36	-44.44	489.99	506.29	15	NONE	NONE

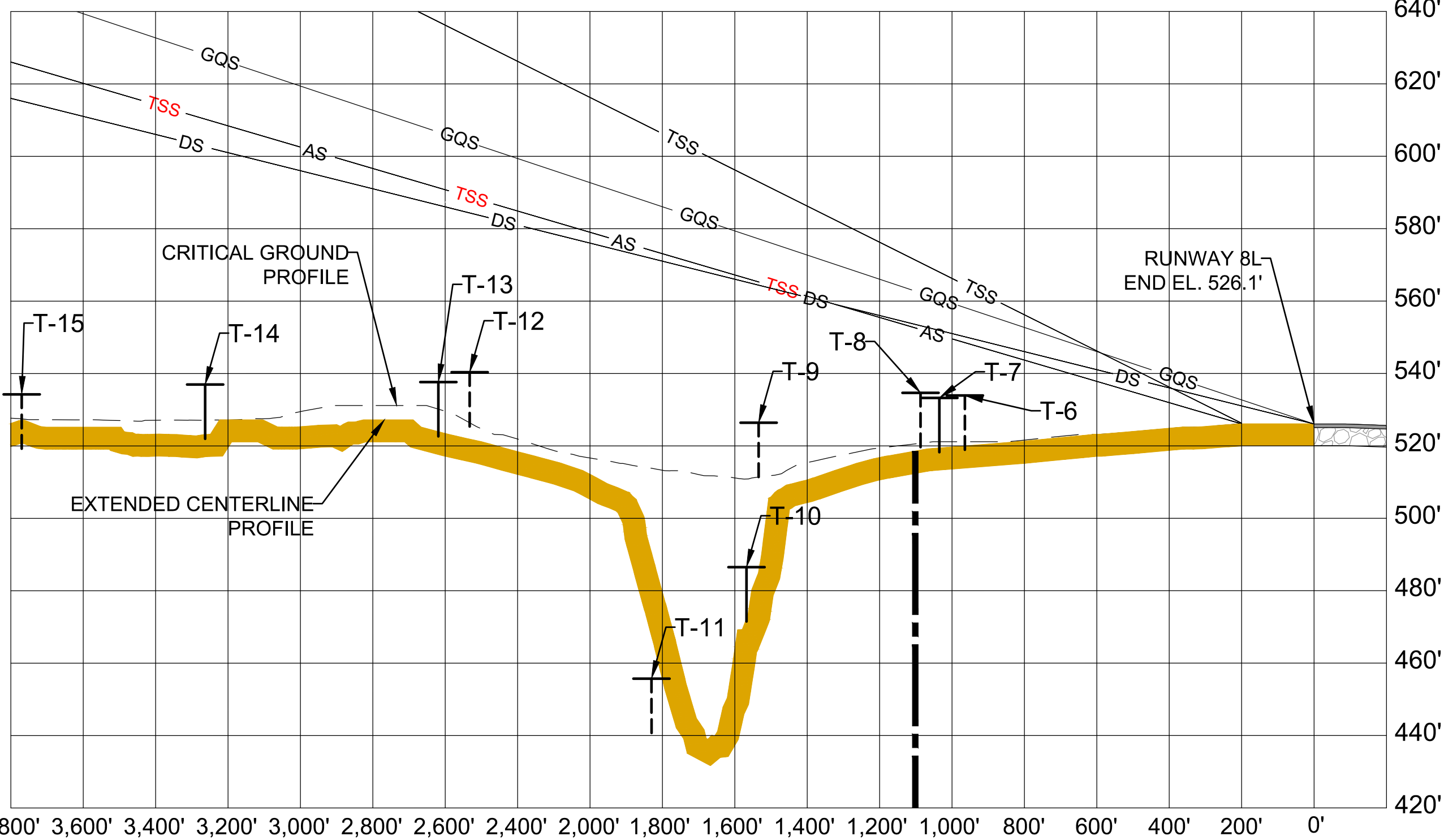
*NOTE: ALL PRIVATE ROADS/ROADWAYS/INTERSTATES/RAILROADS ARE DEPICTED 10/15/17/23 FEET HIGHER THAN THE SURVEYED LOCATION PER FAA SOP NO. 200

RUNWAY 8L-26R LINE-OF-SIGHT ANALYSIS

NOTE: AN EXAGGERATED ZOOM HAS BEEN APPLIED TO AID IN DISPLAYING THE LINE-OF-SIGHT ANALYSIS.

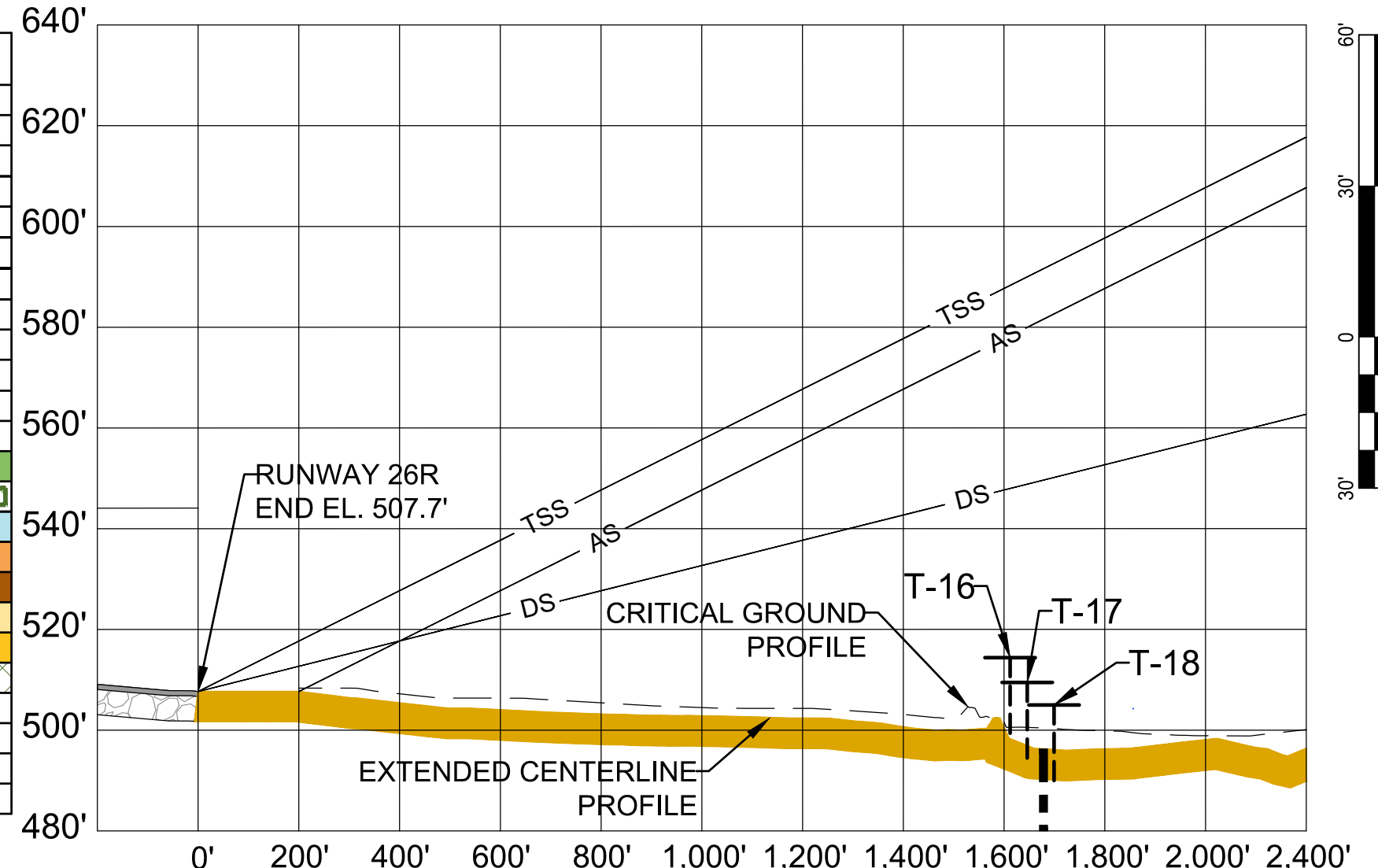


RUNWAY 8L PROFILE VIEW



LEGEND		
	EXISTING	PROPOSED
APPROACH SURFACE	AS	N/A
DEPARTURE SURFACE	DS	N/A
THRESHOLD SITING SURFACE	TSS	TSS
GLIDEPATH QUALIFICATION SURFACE	GQS	N/A
PAPI OBSTACLE CLEARANCE SURFACE	PAPI	N/A
RUNWAY SAFETY AREA	RSA	N/A
RUNWAY OBJECT FREE AREA	ROFA	N/A
RUNWAY OBSTACLE FREE ZONE	ROFZ	N/A
RUNWAY PROTECTION ZONE	RPZ	RPZ
EXTENDED RUNWAY C.L.		N/A
RUNWAY		N/A
PROPOSED DEVELOPMENT - PHASE 1	N/A	
PROPOSED DEVELOPMENT - PHASE 2	N/A	
PROPOSED DEVELOPMENT - PHASE 3	N/A	
PROPOSED BUILDINGS - PHASE 3	N/A	
FUTURE MAP DEVELOPMENT	N/A	
FUTURE MAP BUILDINGS	N/A	
PROPOSED DEMOLISHMENT - PHASE 1	N/A	
TRAVERSEWAY	T	N/A
CRITICAL GROUND PROFILE		N/A
PROPERTY LINE		N/A
FENCE	X	N/A

RUNWAY 26R PROFILE VIEW



C&S COMPANIES
 C&S Engineers, Inc.
 2355 Northside Drive Suite 350
 San Diego, California 92108
 Phone: (619) 296-9373
 Fax: (619) 296-5683
 www.cscos.com

ATKINS
 Member of the SNC-Lavalin Group
 7175 Murrell Road Tel. (321) 775-6231
 Melbourne, Florida 32940 Fax (407) 806-4500
 www.atkinsglobal.com/northamerica

The City of
SAN DIEGO

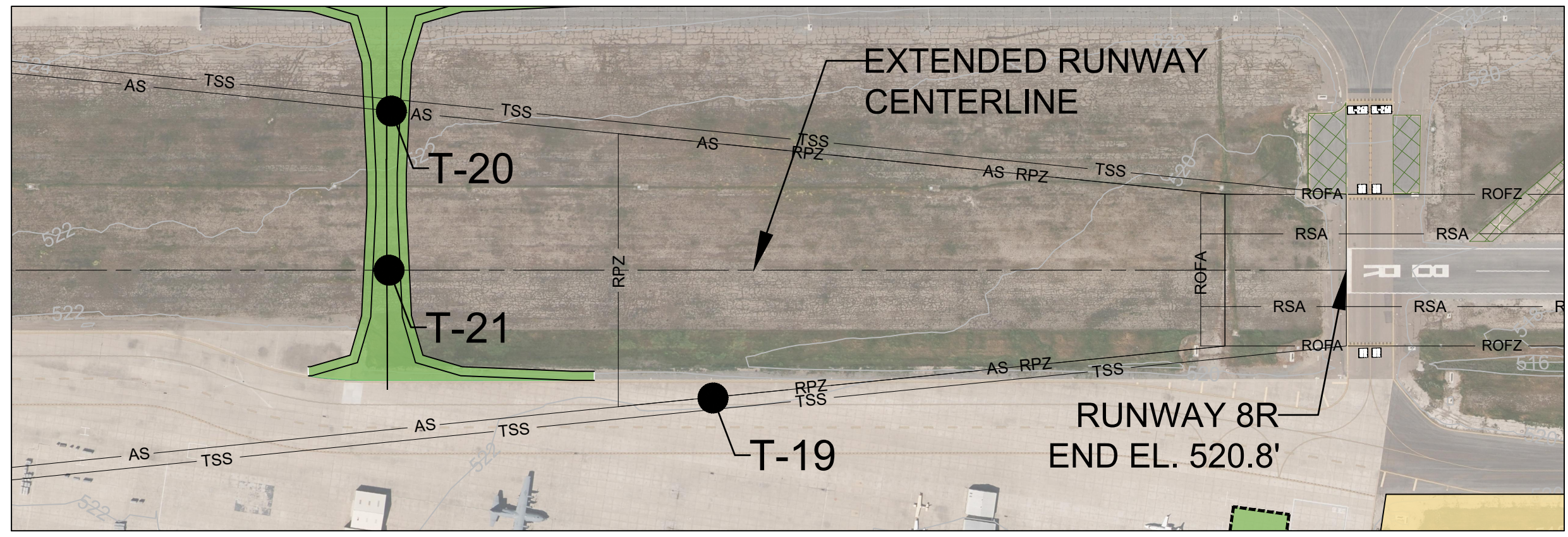
BROWN FIELD MUNICIPAL AIRPORT
 CITY OF SAN DIEGO
 CALIFORNIA

Jun 25, 2019 - 3:33pm
 M:\05_Projects\City of San Diego\100054723_MRF-SDM-AMPL\SDM_V4.0_Planning & Design\4.1_CAD\OX - SDM - Inner Approach_v3.dwg

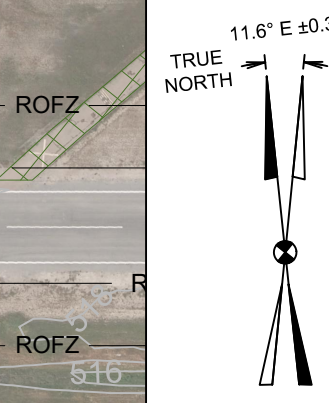
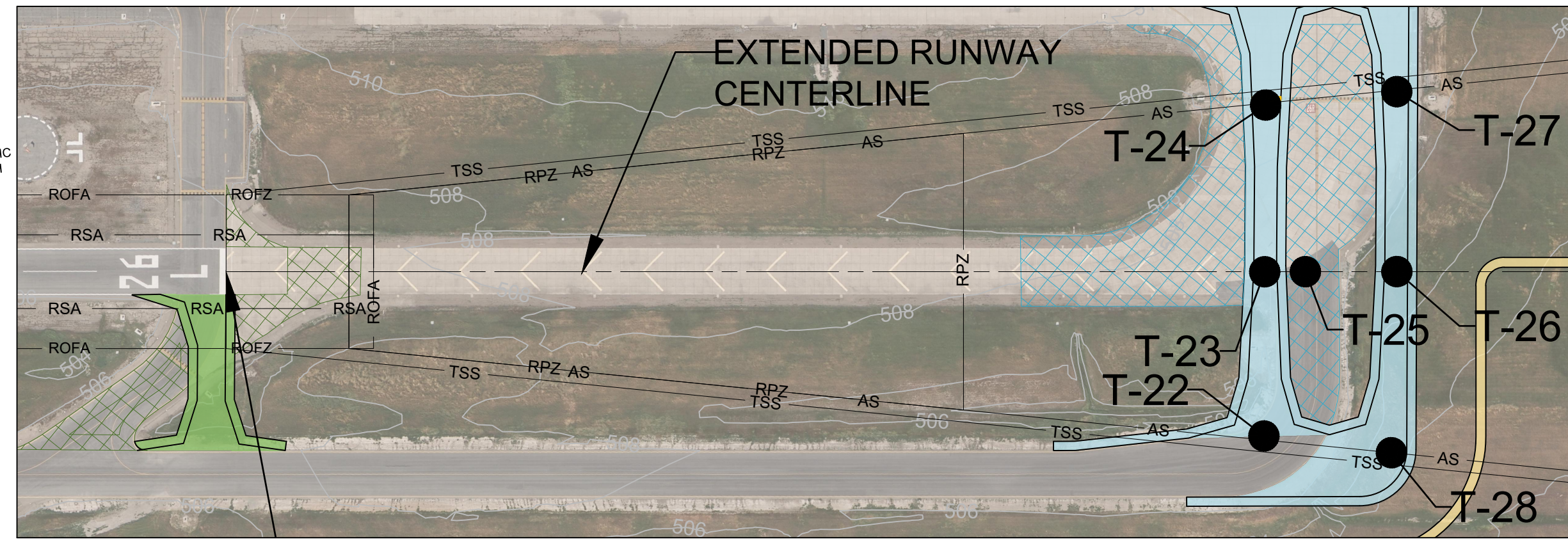
MARK	DATE	DESCRIPTION
REVISIONS		
		PROJECT NO: Q74.001.001
		DATE: JUNE 2019
		DRAWN BY: K.A. Krier
		DESIGNED BY: K.A. Krier
		CHECKED BY: A.M. Marron

RUNWAY 8L-26R INNER APPROACH & DEPARTURE: PLAN & PROFILE

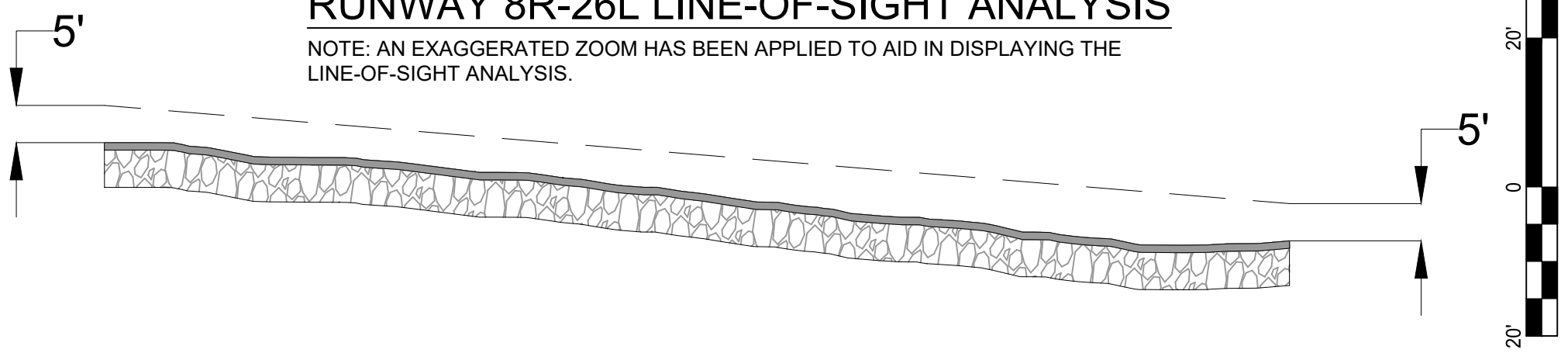
RUNWAY 8R PLAN VIEW



RUNWAY 26L PLAN VIEW



RUNWAY 8R-26L LINE-OF-SIGHT ANALYSIS



NOTE: AN EXAGGERATED ZOOM HAS BEEN APPLIED TO AID IN DISPLAYING THE LINE-OF-SIGHT ANALYSIS.



OBJECT ID	DESCRIPTION	SURVEY DATE	20:1 PART 77 APPROACH SURFACE PENETRATION	20:1 THRESHOLD SITING SURFACE PENETRATION	40:1 DEPARTURE SURFACE PENETRATION	GROUND ELEVATION (MSL)	OBJECT ELEVATION (MSL)	OBJECT ELEVATION (AGL)	TRIGGERING EVENT	PROPOSED DISPOSITION
T-19	TAXIWAY A	7/10/2018	-4.37	-14.37	12.43	520.00	560.00	40	NONE	NONE
T-20	FUTURE TAXIWAY	7/10/2018	-37.83	-47.83	1.70	522.00	562.00	40	NONE	NONE
T-21	FUTURE TAXIWAY	7/10/2018	-31.63	-41.63	2.80	528.00	568.00	40	NONE	NONE

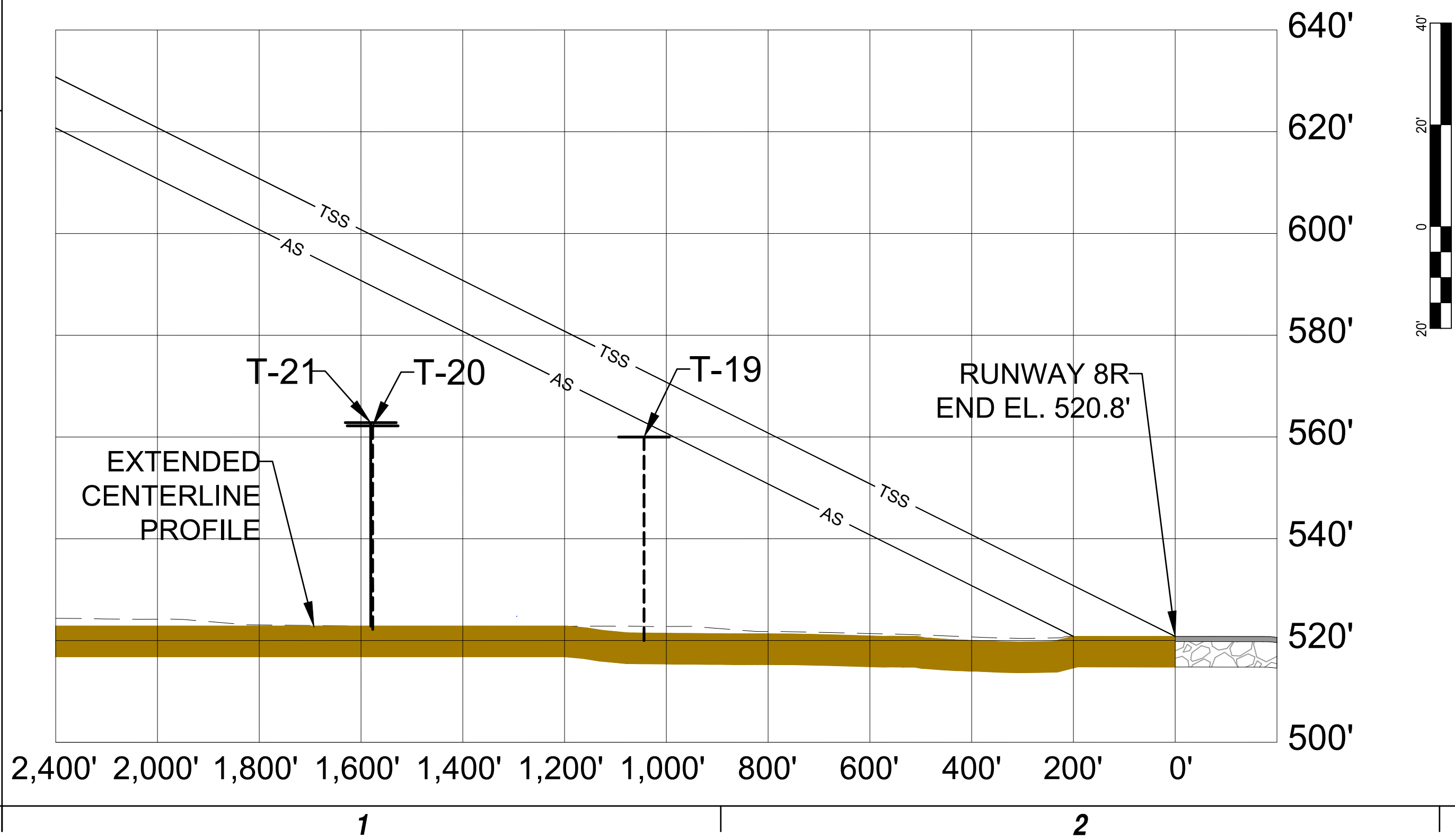
NOTE: THE TRAVERSEWAY AGL ELEVATION USED FOR THE FUTURE TAXIWAY CALCULATION WAS DERIVED FROM THE TAIL HEIGHT OF THE CRITICAL AIRCRAFT.

	EXISTING	PROPOSED
APPROACH SURFACE	AS	N/A
DEPARTURE SURFACE	DS	N/A
THRESHOLD SITING SURFACE	TSS	N/A
RUNWAY SAFETY AREA	RSA	N/A
RUNWAY OBJECT FREE AREA	ROFA	N/A
RUNWAY OBSTACLE FREE ZONE	ROFZ	N/A
RUNWAY PROTECTION ZONE	RPZ	N/A
EXTENDED RUNWAY C.L.		N/A
RUNWAY		N/A
PROPOSED DEVELOPMENT - PHASE 1	N/A	
PROPOSED BUILDINGS - PHASE 1	N/A	
PROPOSED DEVELOPMENT - PHASE 2	N/A	
PROPOSED BUILDINGS - PHASE 2	N/A	
FUTURE MAP DEVELOPMENT	N/A	
FUTURE MAP BUILDINGS	N/A	
PROPOSED DEMOLISHMENT - PHASE 1	N/A	
PROPOSED DEMOLISHMENT - PHASE 2	N/A	
TRAVERSEWAY	T	N/A
CRITICAL GROUND PROFILE		N/A

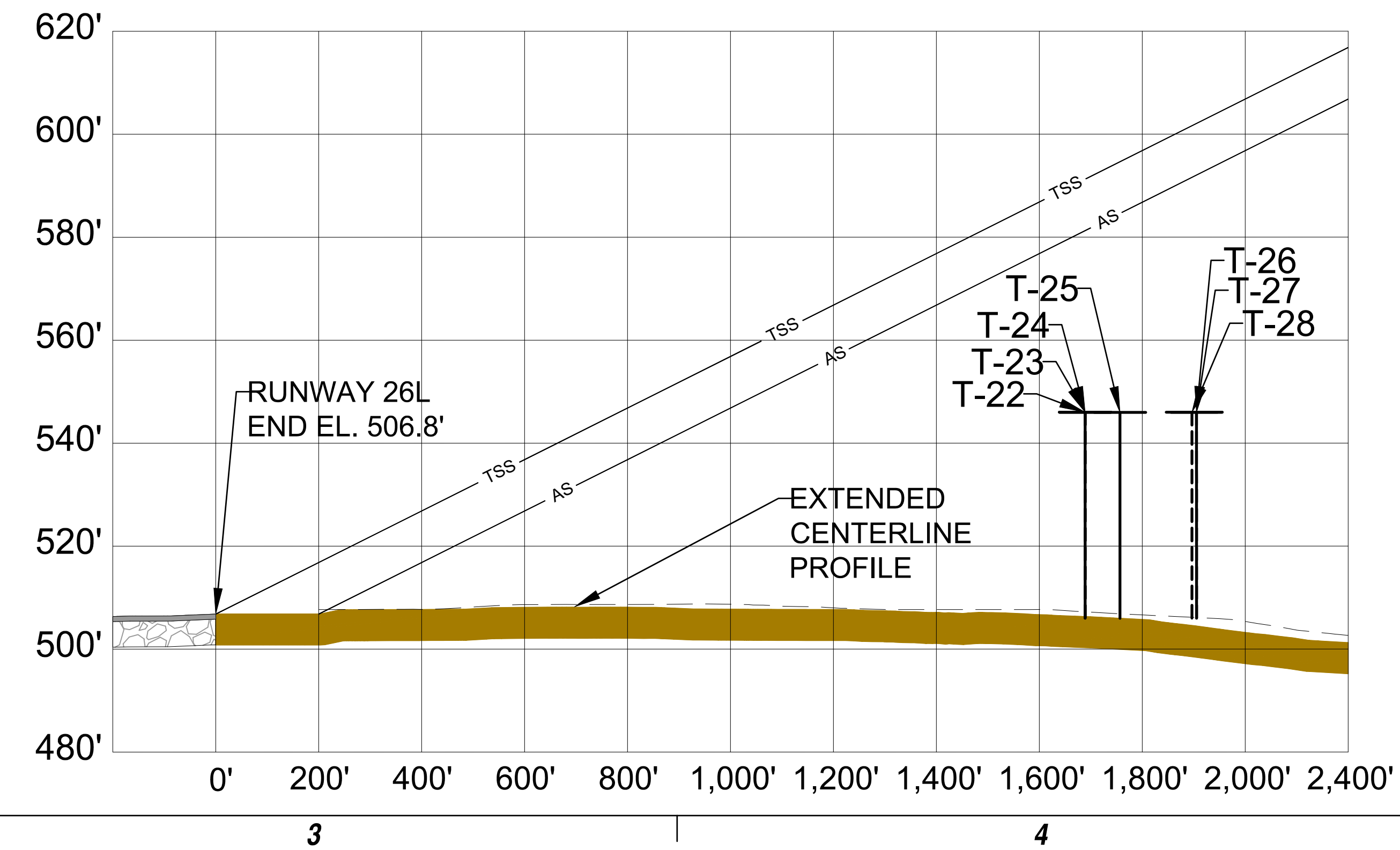
OBJECT ID	DESCRIPTION	SURVEY DATE	20:1 PART 77 APPROACH SURFACE PENETRATION	20:1 THRESHOLD SITING SURFACE PENETRATION	40:1 DEPARTURE SURFACE PENETRATION	GROUND ELEVATION (MSL)	OBJECT ELEVATION (MSL)	OBJECT ELEVATION (AGL)	TRIGGERING EVENT	PROPOSED DISPOSITION
T-22	FUTURE TAXIWAY	11/7/2013	-43.86	-43.86	-2.34	506.00	546.00	40	NONE	NONE
T-23	FUTURE TAXIWAY	11/7/2013	-43.89	-43.89	-2.36	506.00	546.00	40	NONE	NONE
T-24	FUTURE TAXIWAY	11/7/2013	-43.97	-43.97	-2.40	506.00	546.00	40	NONE	NONE
T-25	TAXIWAY	11/7/2013	-53.77	-53.77	-12.30	506.00	546.00	40	NONE	NONE
T-26	FUTURE TAXIWAY	11/7/2013	-65.62	-65.62	-13.22	506.00	546.00	40	NONE	NONE
T-27	FUTURE TAXIWAY	11/7/2013	-66.07	-66.07	-13.44	506.00	546.00	40	NONE	NONE
T-28	FUTURE TAXIWAY	11/7/2013	-66.07	-66.07	-13.44	506.00	546.00	40	NONE	NONE

NOTE: THE TRAVERSEWAY AGL ELEVATION USED FOR THE FUTURE TAXIWAY CALCULATION WAS DERIVED FROM THE TAIL HEIGHT OF THE CRITICAL AIRCRAFT.

RUNWAY 8R PROFILE VIEW



RUNWAY 26L PROFILE VIEW



C&S Engineers, Inc.
2355 Northside Drive
Suite 350
San Diego, California 92108
Phone: (619) 296-9373
Fax: (619) 296-5683
www.cscos.com



Member of the SNC-Lavalin Group
7175 Murrell Road
Melbourne, Florida 32940
Tel. (321) 775-6231
Fax (407) 806-4500
www.atkinsglobal.com/northamerica

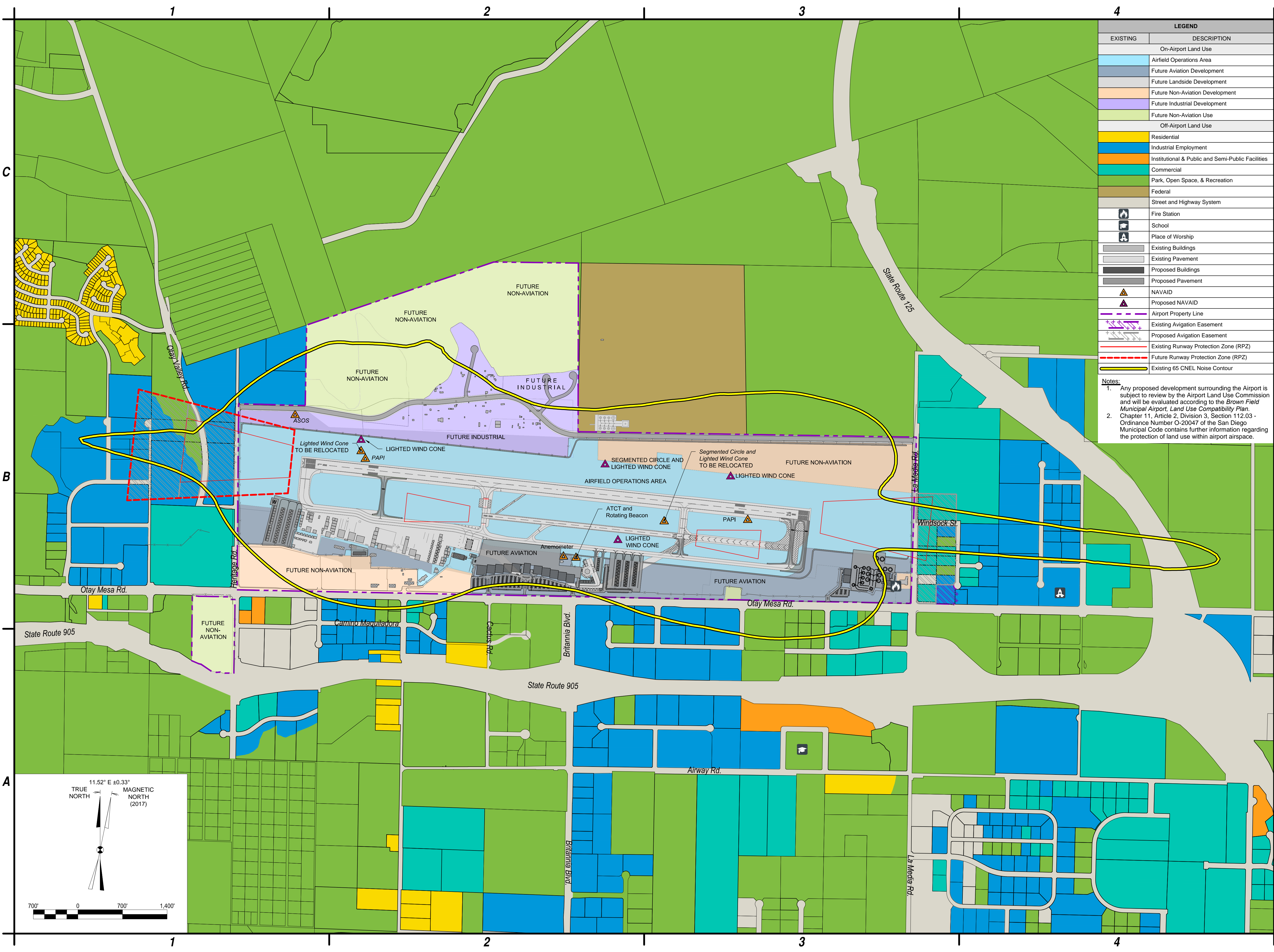


BROWN FIELD MUNICIPAL AIRPORT
CITY OF SAN DIEGO
CALIFORNIA

Jun 25, 2019 - 3:39pm M:\05_Projects\City of San Diego\100054723_MRF-SDM-AMPL\SDM_V4.0 Planning & Design\4.1 CAD\OX - SDM - Inner Approach_v3.dwg

MARK	DATE	DESCRIPTION
REVISIONS		
		PROJECT NO: Q74.001.001
		DATE: JUNE 2019
		DRAWN BY: K.A. Krier
		DESIGNED BY: K.A. Krier
		CHECKED BY: A.M. Marron

RUNWAY 8R-26L INNER APPROACH & DEPARTURE: PLAN & PROFILE



LEGEND	
EXISTING	DESCRIPTION
On-Airport Land Use	
[Light Blue]	Airfield Operations Area
[Blue]	Future Aviation Development
[Light Green]	Future Landside Development
[Purple]	Future Non-Aviation Development
[Light Green]	Future Industrial Development
[Light Green]	Future Non-Aviation Use
Off-Airport Land Use	
[Yellow]	Residential
[Blue]	Industrial Employment
[Orange]	Institutional & Public and Semi-Public Facilities
[Cyan]	Commercial
[Green]	Park, Open Space, & Recreation
[Brown]	Federal
[Grey]	Street and Highway System
[Fire Station Icon]	Fire Station
[School Icon]	School
[Place of Worship Icon]	Place of Worship
[Existing Buildings Icon]	Existing Buildings
[Proposed Buildings Icon]	Proposed Buildings
[Proposed Pavement Icon]	Proposed Pavement
[NAVAID Icon]	NAVAID
[Proposed NAVAID Icon]	Proposed NAVAID
[Airport Property Line Icon]	Airport Property Line
[Existing Avigation Easement Icon]	Existing Avigation Easement
[Proposed Avigation Easement Icon]	Proposed Avigation Easement
[Existing Runway Protection Zone (RPZ) Icon]	Existing Runway Protection Zone (RPZ)
[Future Runway Protection Zone (RPZ) Icon]	Future Runway Protection Zone (RPZ)
[Existing 65 CNEL Noise Contour Icon]	Existing 65 CNEL Noise Contour

Notes:

- Any proposed development surrounding the Airport is subject to review by the Airport Land Use Commission and will be evaluated according to the *Brown Field Municipal Airport, Land Use Compatibility Plan*.
- Chapter 11, Article 2, Division 3, Section 112.03 - Ordinance Number O-20047 of the San Diego Municipal Code contains further information regarding the protection of land use within airport airspace.

C&S COMPANIES
 C&S Engineers, Inc.
 2355 Northside Drive
 Suite 350
 San Diego, California 92108
 Phone: (619) 296-9373
 www.cscos.com

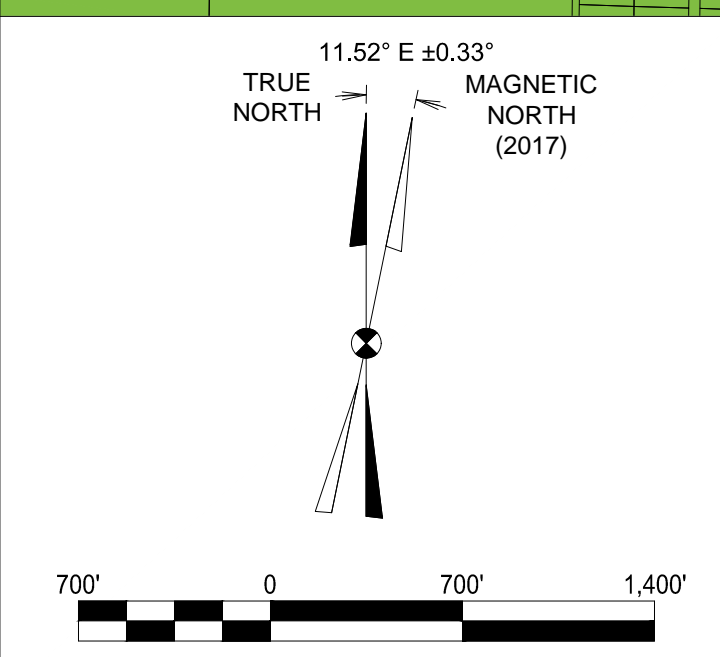
The City of
SAN DIEGO

**AIRPORT LAYOUT PLAN UPDATE
 BROWN FIELD MUNICIPAL AIRPORT**

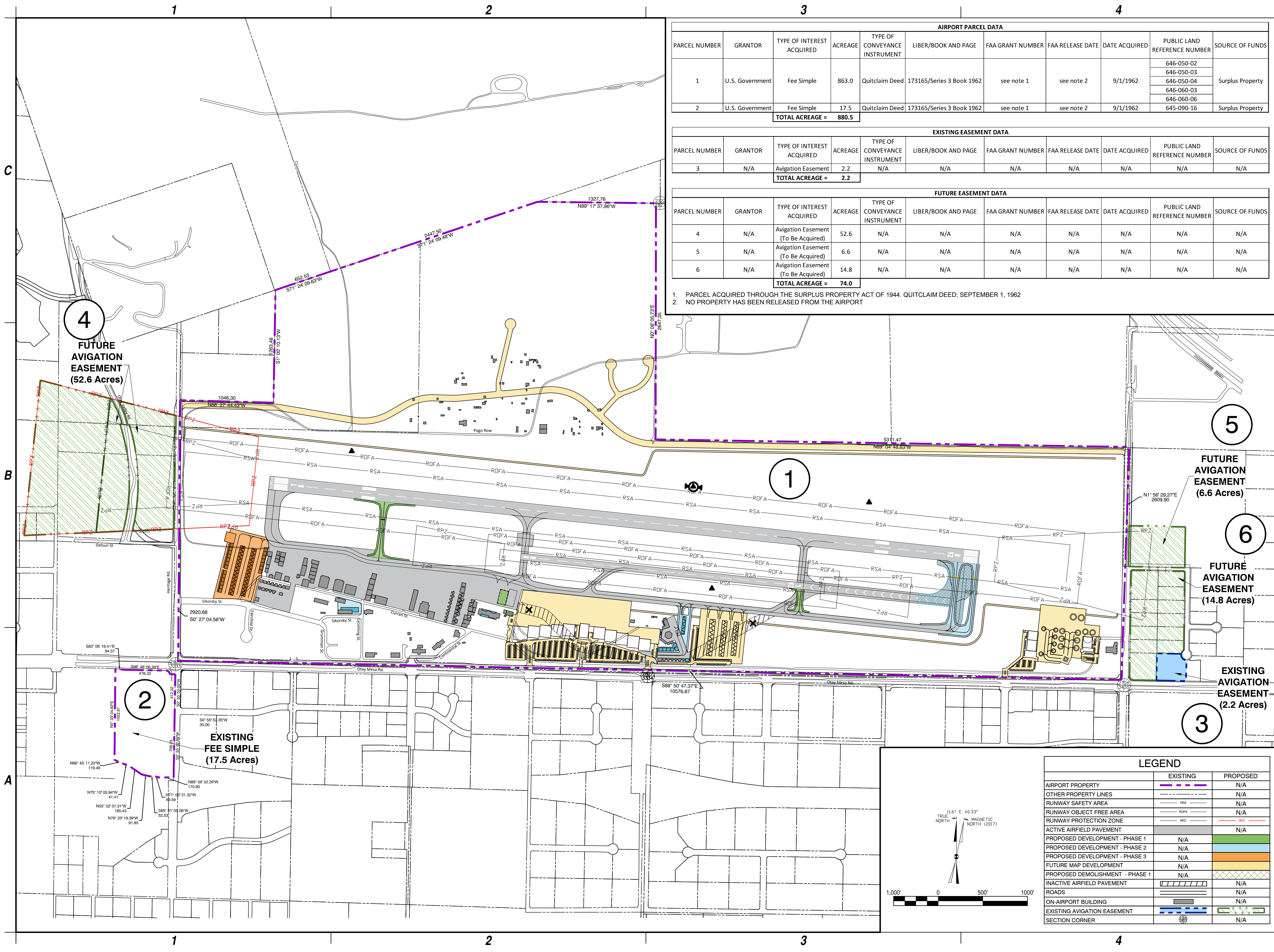
**CITY OF SAN DIEGO
 CALIFORNIA**

MARK	DATE	DESCRIPTION
REVISIONS		
PROJECT NO: Q74.001.001		
DATE: JUNE 2019		
DRAWN BY: J.J.S.		
DESIGNED BY: J.J.S.		
CHECKED BY: N.M.A.		

**LAND USE
 DRAWING**



Jun 21, 2019 - 8:48am
 F:\Projects\Q74 - City of San Diego\Q74001.001 - Airport Master Plans\Planning-Study\CADD\SDM\Sheet Files\8 - Q74001.001 - SDM_Land Use Drawings.dwg



AIRPORT PARCEL DATA										
PARCEL NUMBER	GRANTOR	TYPE OF INTEREST ACQUIRED	ACREAGE	TYPE OF CONVEYANCE INSTRUMENT	LIBER/BOOK AND PAGE	FAA GRANT NUMBER	FAA RELEASE DATE	DATE ACQUIRED	PUBLIC LAND REFERENCE NUMBER	SOURCE OF FUNDS
1	U.S. Government	Fee Simple	863.0	Quitclaim Deed	173165/Series 3 Book 1962	see note 1	see note 2	9/1/1962	646-050-02 646-050-03 646-050-04 646-060-03 646-060-06	Surplus Property
2	U.S. Government	Fee Simple	17.5	Quitclaim Deed	173165/Series 3 Book 1962	see note 1	see note 2	9/1/1962	645-090-16	Surplus Property
			TOTAL ACREAGE =	880.5						

EXISTING EASEMENT DATA										
PARCEL NUMBER	GRANTOR	TYPE OF INTEREST ACQUIRED	ACREAGE	TYPE OF CONVEYANCE INSTRUMENT	LIBER/BOOK AND PAGE	FAA GRANT NUMBER	FAA RELEASE DATE	DATE ACQUIRED	PUBLIC LAND REFERENCE NUMBER	SOURCE OF FUNDS
3	N/A	Avigation Easement	2.2	N/A	N/A	N/A	N/A	N/A	N/A	N/A
			TOTAL ACREAGE =	2.2						

FUTURE EASEMENT DATA										
PARCEL NUMBER	GRANTOR	TYPE OF INTEREST ACQUIRED	ACREAGE	TYPE OF CONVEYANCE INSTRUMENT	LIBER/BOOK AND PAGE	FAA GRANT NUMBER	FAA RELEASE DATE	DATE ACQUIRED	PUBLIC LAND REFERENCE NUMBER	SOURCE OF FUNDS
4	N/A	Avigation Easement (To Be Acquired)	52.6	N/A	N/A	N/A	N/A	N/A	N/A	N/A
5	N/A	Avigation Easement (To Be Acquired)	6.6	N/A	N/A	N/A	N/A	N/A	N/A	N/A
6	N/A	Avigation Easement (To Be Acquired)	14.8	N/A	N/A	N/A	N/A	N/A	N/A	N/A
			TOTAL ACREAGE =	74.0						

1. PARCEL ACQUIRED THROUGH THE SURPLUS PROPERTY ACT OF 1944. QUITCLAIM DEED; SEPTEMBER 1, 1962
2. NO PROPERTY HAS BEEN RELEASED FROM THE AIRPORT



C&S Engineers, Inc.
 2355 Northside Drive
 Suite 350
 San Diego, California 92108
 Phone: (619) 296-9373
 Fax: (619) 296-5683
 www.cscos.com



Member of the SNC-Lavalin Group
 7175 Murrell Road Tel. (321) 775-6231
 Melbourne, Florida 32940 Fax (407) 806-4500
 www.atkinsglobal.com/northamerica



BROWN FIELD MUNICIPAL AIRPORT
CITY OF SAN DIEGO
CALIFORNIA

Jun 25, 2019 - 4:15pm
 M:\05_Projects\City of San Diego\100054723_MF-SDM-AMPLV_SDM_V4.0_Planning & Design\4.1_CAD\X0X - SDM - Exhibit A_V2.dwg

MARK	DATE	DESCRIPTION
REVISIONS		
		PROJECT NO: Q74.001.001
		DATE: JUNE 2019
		DRAWN BY: K.A. Krier
		DESIGNED BY: K.A. Krier
		CHECKED BY: A.M. Marron

Exhibit "A"
Airport
Property
Inventory Map

	EXISTING	PROPOSED
AIRPORT PROPERTY	---	N/A
OTHER PROPERTY LINES	---	N/A
RUNWAY SAFETY AREA	---	N/A
RUNWAY OBJECT FREE AREA	---	N/A
RUNWAY PROTECTION ZONE	---	N/A
ACTIVE AIRFIELD PAVEMENT	---	N/A
PROPOSED DEVELOPMENT - PHASE 1	N/A	---
PROPOSED DEVELOPMENT - PHASE 2	N/A	---
PROPOSED DEVELOPMENT - PHASE 3	N/A	---
FUTURE MAP DEVELOPMENT	N/A	---
PROPOSED DEMOLISHMENT - PHASE 1	N/A	---
INACTIVE AIRFIELD PAVEMENT	---	N/A
ROADS	---	N/A
ON-AIRPORT BUILDING	---	N/A
EXISTING AVIGATION EASEMENT	---	N/A
SECTION CORNER	---	N/A

